

# Spring Supports

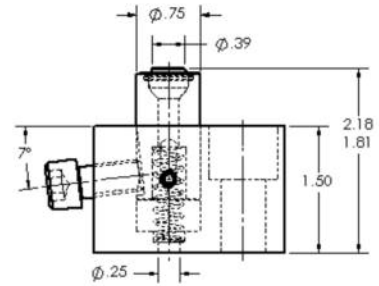
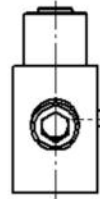
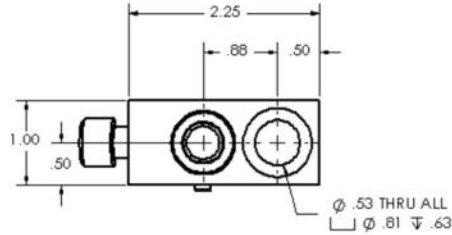


- Black oxide finish
- Provides additional support and vibration dampening
- Built in self-aligning ball element for compact height

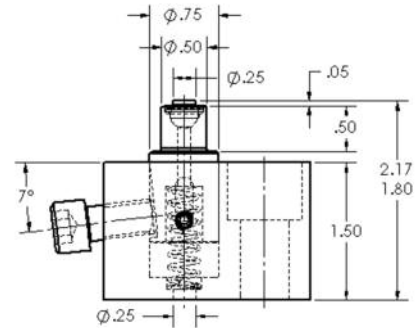
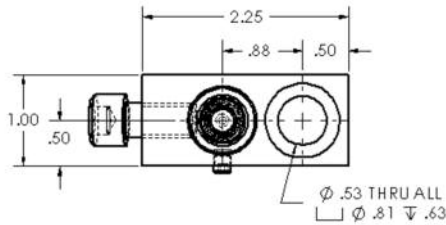
- Socket head cap screw locks support in place at desired height
- Positive stop



AMFLEX SPRING WORK SUPPORT  
WITH 500S SMOOTH BALL ELEMENT  
AMF-87593-01



AMFLEX SPRING WORK SUPPORT  
WITH 400S SMOOTH BALL ELEMENT  
AMF-87593-02

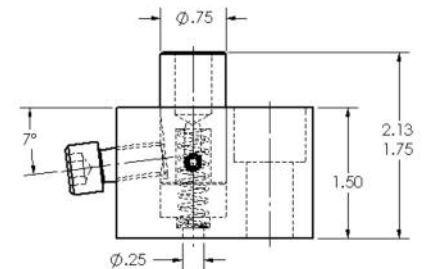
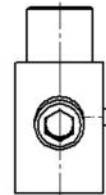
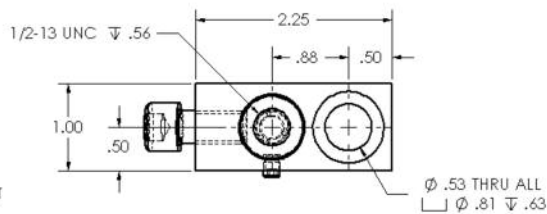


- Black oxide finish
- Provides additional support and vibration dampening
- Socket head cap screw locks support in place at desired height

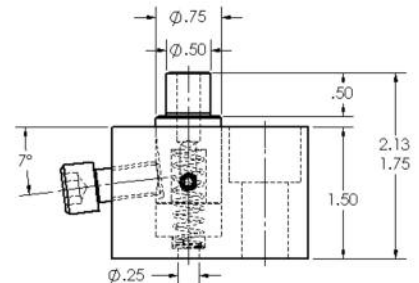
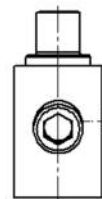
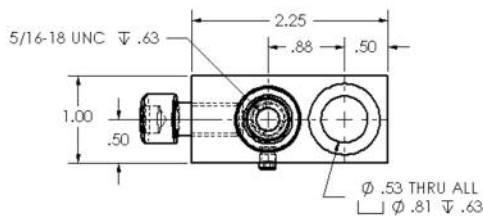
- Positive stop
- Fits adjustable ball element (400 or 500 series) for additional height



AMFLEX SPRING WORK SUPPORT  
WITH 1/2-13 TAPPED HOLE  
AMF-87593-03

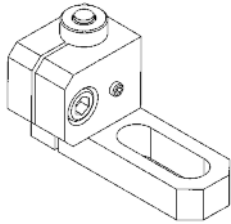


AMFLEX SPRING WORK SUPPORT  
WITH 5/16-18 TAPPED HOLE  
AMF-87593-04



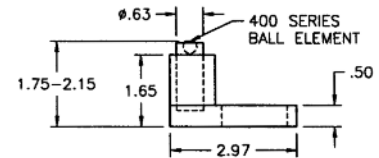
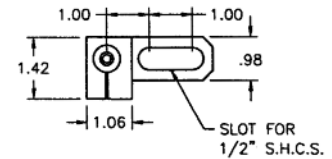
# Spring Supports

## 400 Series

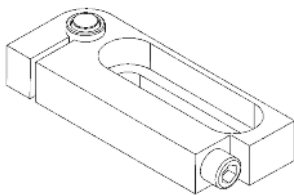


AMF-87478  
(Shown above)

- Black oxide finish
- Provides additional support and vibration dampening
- Built in self aligning ball element for compact height
- Socket head caps screw locks support in place at desired height
- Force capacity = 1,125 lbs.

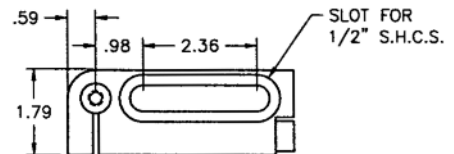
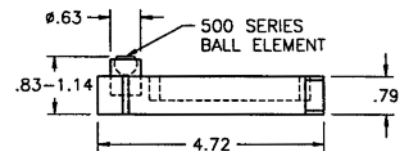


## 500 Series



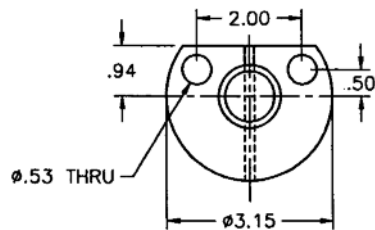
AMF-87593  
(Shown above)

- Black oxide finish
- Provides additional support and vibration dampening
- Built in self aligning ball element for compact height
- Socket head caps screw locks support in place at desired height
- Force capacity = 1,800 lbs.

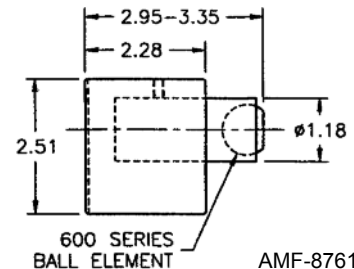


## 600 Series

- Black oxide finish
- Provides additional support and vibration dampening
- Built in self aligning ball element for compact height
- Socket head caps screw locks support in place at desired height
- Force capacity = 2,225 lbs.

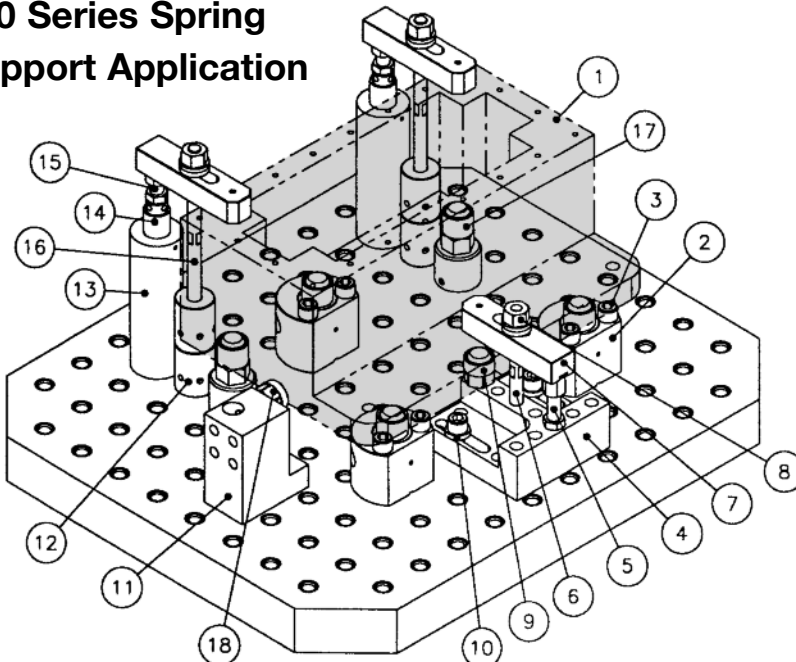


See application example below for use.



AMF-87615  
(Shown above)

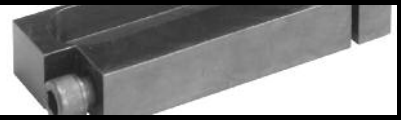
## 600 Series Spring Support Application



### Bill of Materials

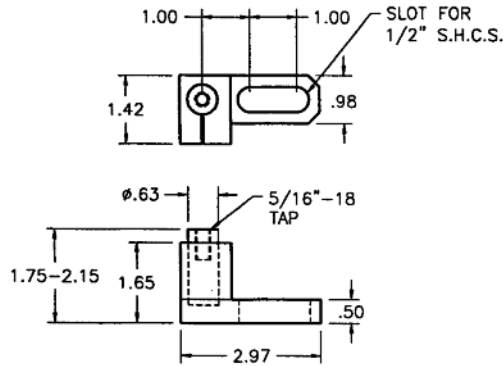
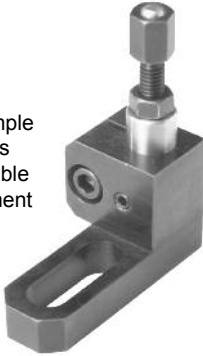
- (1) Machined part
- (3) 600 series spring supports AMF-87615
- (6) 1/2"-13 x 3.50 long S.H.C.S.
- (1) Universal clamp base AMF-24520
- (1) Jack screw AMF-87184
- (1) 5" long clamping screw AMF-77562
- (3) 600 series smooth clamp AMF-87623
- (3) Spherical nut (with washer) AMF-87100
- (1) 600 series smooth fixed ball element 1,200 tall AMF-87601
- (2) 1/2"-13 x 2.25 long S.H.C.S. with flat washer AMF-87747
- (1) Heavy duty locator AMF-77520 with (2) precision dowel screws AMF-87992 (not visible)
- (4) precision edge towers (Ø1.5x2.0) AMF-67520
- (2) 6" Universal body AMF-66516
- (2) 2" Universal threaded plug AMF-66522
- (2) Jack screw AMF-87339
- (2) 8" long clamping screw AMF-77565
- (2) 600 series smooth support units AMF-87691
- (1) 600 series smooth fixed ball element 1,000 Tall AMF-87636

# Spring Supports



## Threaded Spring Support 5/16"-18

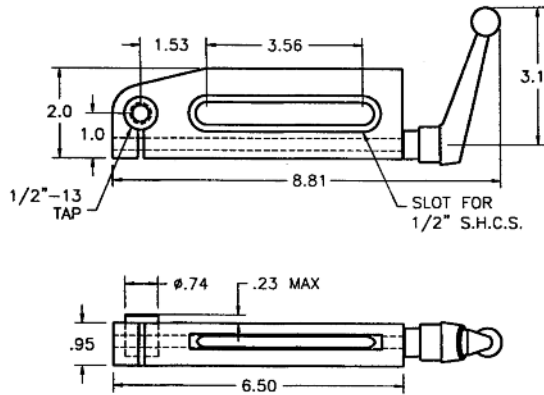
AMF-76550  
Application example  
with 400 series  
S.A.F.E. Adjustable  
Height Ball Element  
AMF-87481



- Black oxide finish
- Provides additional support and vibration dampening
- Works well with 400 series ball elements (adjustable or fixed)
- Force capacity = 1,125 lbs.

## Threaded Spring Support 1/2"-13

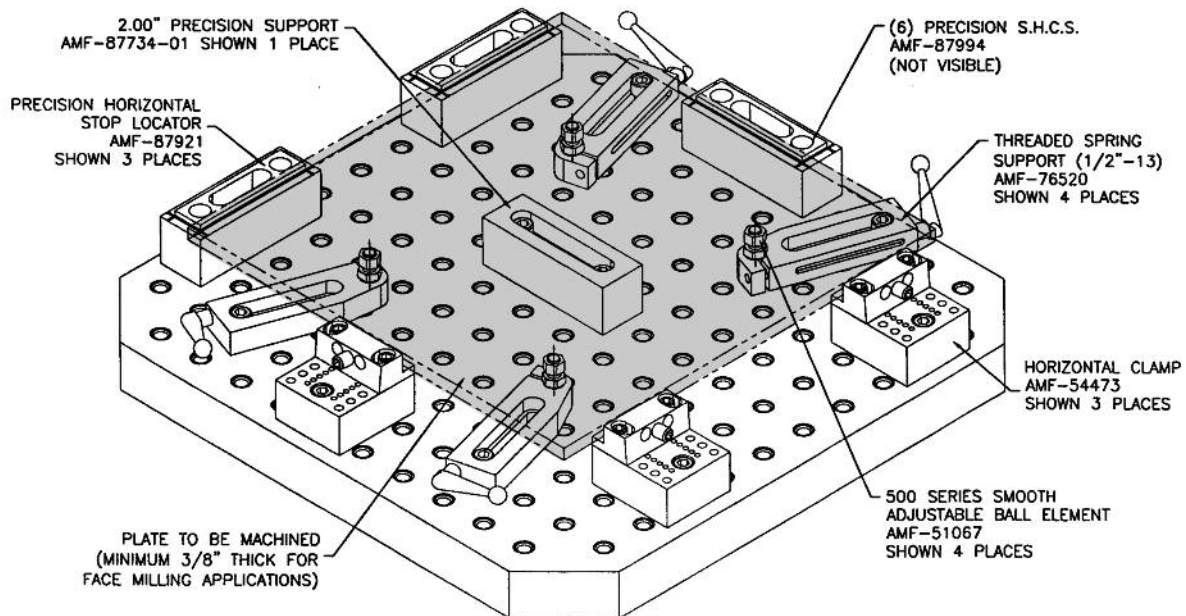
AMF-76520  
Application example  
with 500 series  
S.A.F.E. Adjustable  
Height Ball Element  
AMF-87584 and  
2-1/2" round riser



- Black oxide finish
- Provides additional support and vibration dampening
- Threaded to accept 1/2"-13 ball elements and threaded v's
- Force capacity = 500 lbs.

See application example below for use.

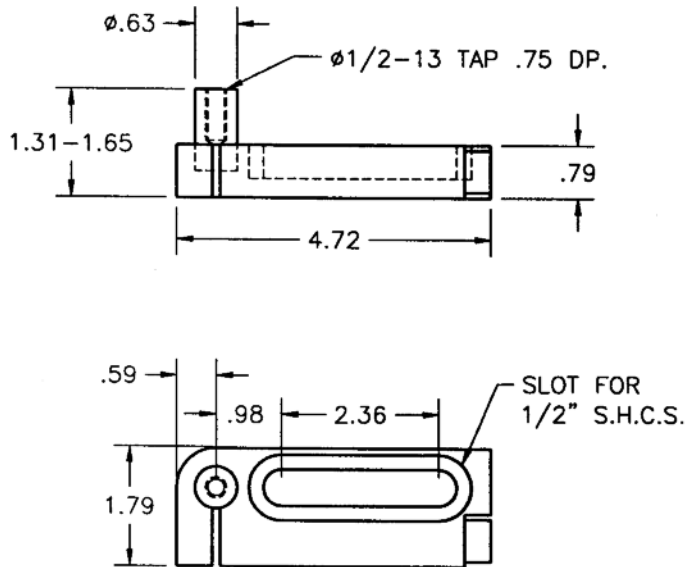
## Threaded Spring Support 1/2"-13 Application



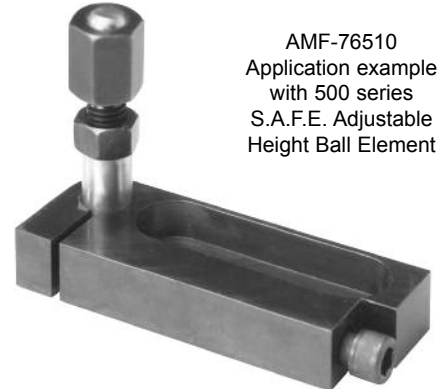


# Spring Supports

## Spring Support

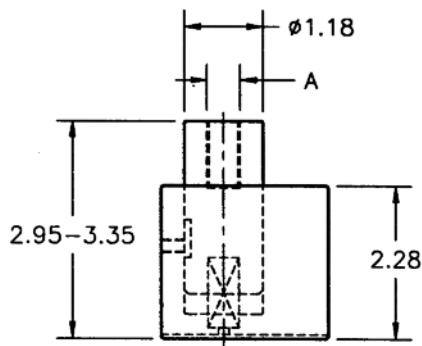


- Black oxide finish
- Provides additional support and vibration dampening
- Threaded to accept 1/2"-13 ball elements and threaded v's
- Force capacity = 1,800 lbs.



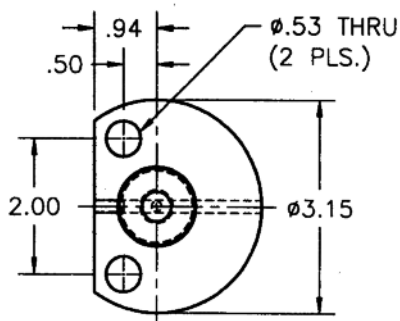
AMF-76510  
Application example  
with 500 series  
S.A.F.E. Adjustable  
Height Ball Element

## Spring Support



Dimension (in) A thread	Part # AMF -
1/2"-13	<a href="#">76530</a>
5/8"-11	<a href="#">76630</a>

- Black oxide finish
- Provides additional support and vibration dampening
- Threaded to accept 1/2"-13 or 5/8"-11 ball elements and threaded v's
- Force capacity = 2,250 lbs.







## *Innovative People, Products and Processes*

At AME, innovation is part of our culture. You can see the result in our processes, partnerships, people and services—and in the precision engineered components, machines and services showcased here. To learn more about AME and our innovative approach to precision machining, please call **815-962-6076** or visit **[www.ame.com](http://www.ame.com)** today.



2500 Latham Street Rockford, IL 61103

Phone: 815-962-6076 Fax: 815-962-6483 Toll Free: 1-800-225-2331

web: [www.ame.com](http://www.ame.com)

Data subject to change.

TL-FC-2012WEB

Printed in USA

Copyright © 2010

**ISO-9001**

**REGISTERED**