

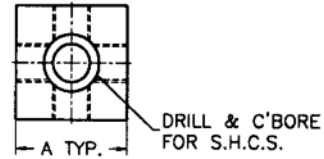
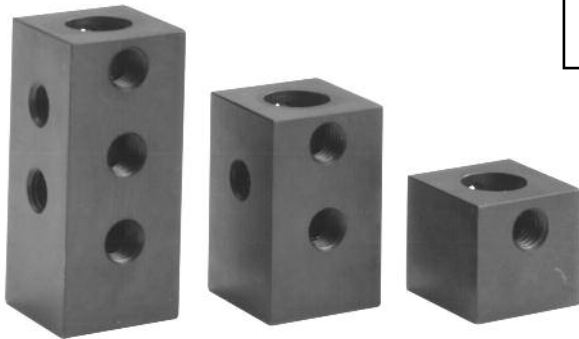
Locators



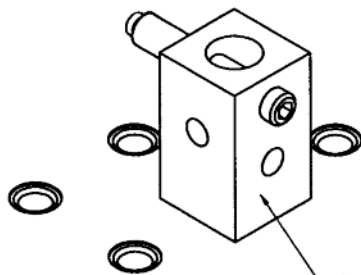
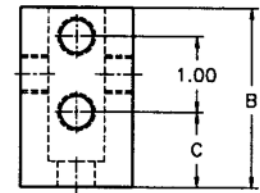
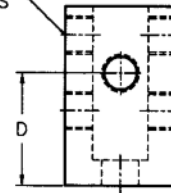
Mini-Work Towers

- Black oxide finish
- Used for locating stops and supports
- Use as a horizontal clamp when equipped with threaded ball screws

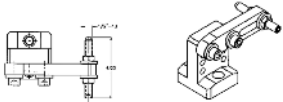
MINI-WORK TOWERS						
System	Dimensions shown in inches					Part # AMF -
	A	B	C	D	E	
1/2"-13	1.500	1.500	1.00	1.500	1	62510
	1.500	2.500	1.00	1.50	3	62520
	1.500	3.500	1.00	1.50	5	62530
5/8"-11	1.750	1.750	1.25	1.75	1	62510-01
	1.750	2.750	1.25	1.75	3	62520-01
	1.750	3.750	1.25	1.75	5	62530-01



1/2"-13 THRU
"E" PLACES



(1) AMF-62520 MINI-WORK TOWER
WITH 1/2"-13 x 1 3/4" S.H.C.S. &
1/2"-13 x 3" SET SCREW

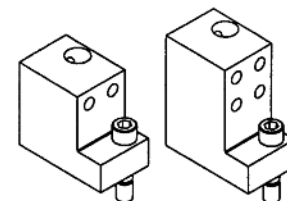
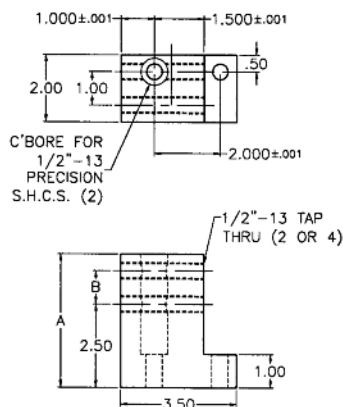
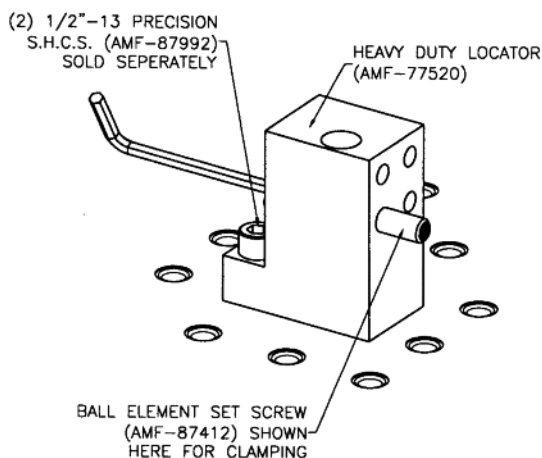


Locators

Heavy Duty Locator

- Black oxide finish
- Accepts fixed or adjustable height, smooth or serrated ball elements
- Commonly used as a precision stop
- May be used as a horizontal clamp when combined with a ball element set screw as shown below

HEAVY DUTY LOCATOR		
Dimensions shown in inches		Part # AMF -
A	B	
3.00	N/A	77510
4.00	1.00	77520

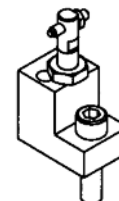


Heavy-duty locators AMF-77520 & 77510 (shown above) with 1/2"-13 precision S.H.C.S.'s AMF-87992 sold separately

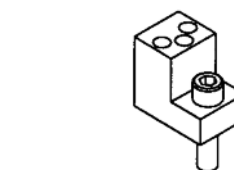
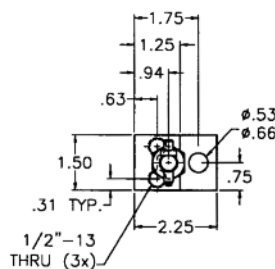
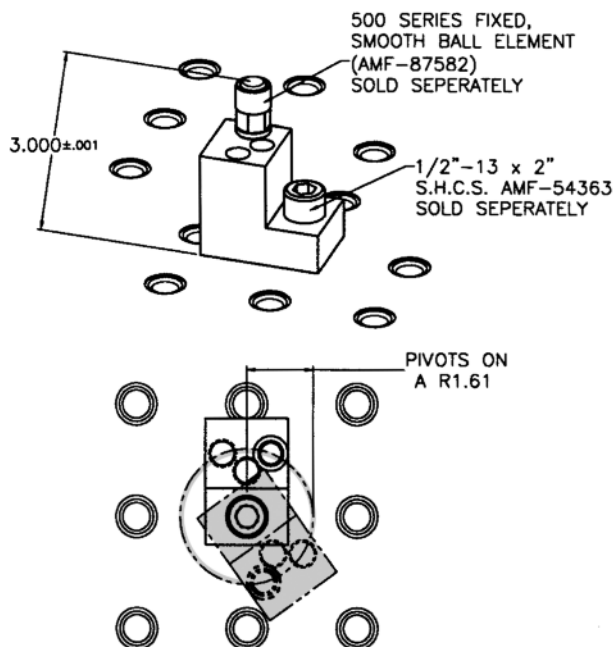
Universal Locator Block

- Black oxide finish
- Accurate support height
- Fits 1/2" and 5/8" grids
- Base may be purchased separately
- Works well with fixed or adjustable height, smooth or serrated ball elements (as shown below)

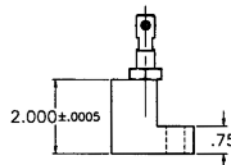
UNIVERSAL LOCATOR BLOCK		
System	Locator Ass'y Part # AMF-	Part # AMF -
1/2"-13	87524	87464
5/8"-11	54438	51473



Locator Ass'y AMF-87524 Shown Above (1/2"-13 System) with 1/2"-13 x 2" S.H.C.S. AMF-54363 Sold Separately



Universal Locator Block AMF-87464 Shown Above (1/2"-13 System) with 1/2"-13 x 2" S.H.C.S. AMF-54363 Sold Separately



Locators

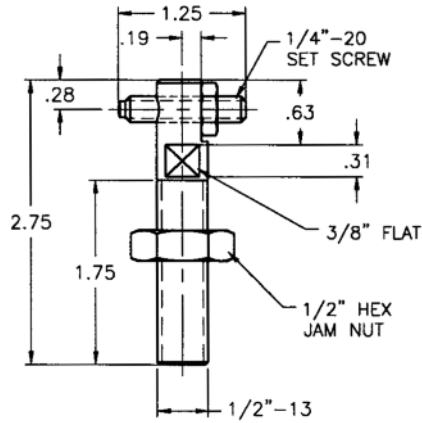


Finger Locator - Round



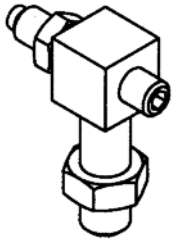
Locator Assembly
AMF-87524

- Black oxide finish
- Set screw provides adjustment for part location
- By changing the length of the set screw different locations are reached
- 5/8" size is available upon request



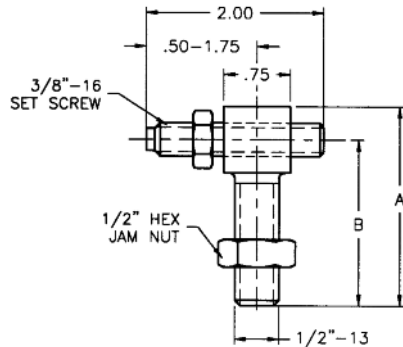
AMF-54463
(Shown above)

Finger Locator - Square

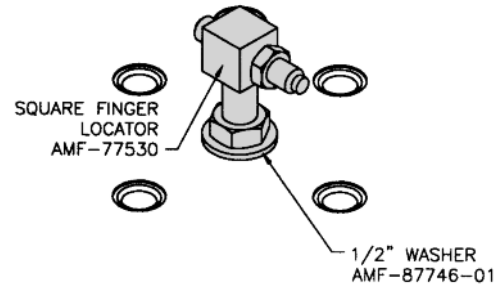


AMF-77530
1/2" System
(Shown above)

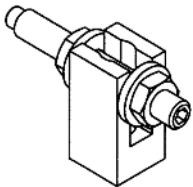
- Black oxide finish
- Set screw provides adjustment for part location
- By changing the length of the set screw different locations are reached



Thread	Dimensions shown in inches		Part # AMF -
	A	B	
1/2"-13	2.25	1.88	77530
1/2"-13	2.75	2.38	77540
5/8"-11	2.75	2.38	77630
5/8"-11	3.50	3.13	77640



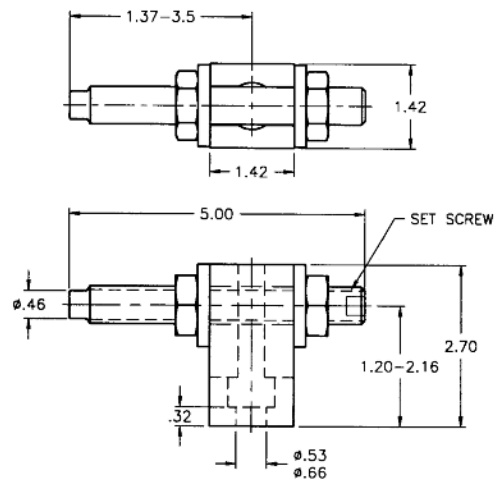
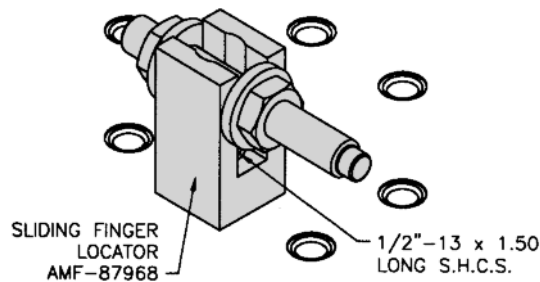
Sliding Finger Locator



AMF-87968
1/2" System
(Shown above)

AMF-87665
5/8" System

- Black oxide finish
- The height of this unit is adjustable from 1.20" to 2.16"
- Set screw provides adjustment for part location within a range of 1.37" to 3.50"





Innovative People, Products and Processes

At AME, innovation is part of our culture. You can see the result in our processes, partnerships, people and services—and in the precision engineered components, machines and services showcased here. To learn more about AME and our innovative approach to precision machining, please call **815-962-6076** or visit **www.ame.com** today.



2500 Latham Street Rockford, IL 61103

Phone: 815-962-6076 Fax: 815-962-6483 Toll Free: 1-800-225-2331

web: www.ame.com

Data subject to change.

TL-FC-2012WEB

Printed in USA

Copyright © 2010

ISO-9001

REGISTERED