

**AMROK
TOMBSTONES**



AMROK®
Cast Iron, Steel, Aluminum, Epoxy Mineral

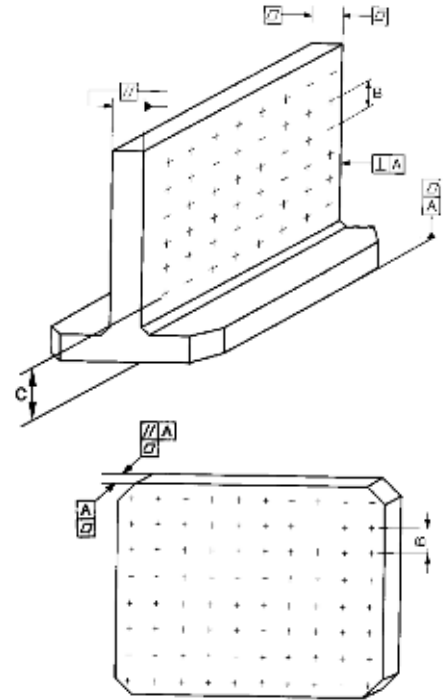
ADVANCED
MACHINE & ENGINEERING CO.

Product Info

All tombstones are made to fit your machining center either by edge locating or with hardened and ground wear pads, center locating, or just plain mounting holes to your specifications.

**Approval drawings are provided before manufacturing.
CMM report is available upon request.**




We can provide plain faces, hole grid patterns with precision bushings and threaded inserts, precision T-slots, or any machining to your specifications. All configurations are available in **Standard** or **Precision** quality. All tombstones and plates are stress relieved. We also specialize in hydraulic/pneumatic or manual dedicated fixturing. We at Advanced Machine & Engineering have a complete team of engineers to design and build whatever type of fixture you might need.



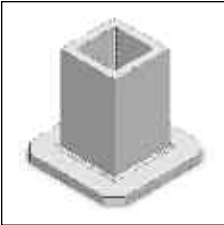
PLEASE SPECIFY WHEN ORDERING:

- A. **Part Number** (unless you need a special configuration.)
- B. After each part number specify "C" (casting only), "BO" (base machined only with mounting holes and locating description and overall height finish with lift holes), "BS" (plain machining complete), and "D" (dedicated machining).
- C. **Material:** Cast Iron, Aluminum, or Steel.
- D. **Quality:** *Standard* or *Precision*
- E. **Machining Specification.**

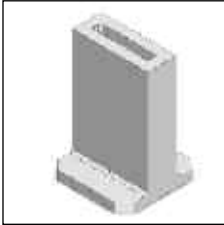
Note: For *Epoxy Mineral Tombstones*, refer to our Triag Epoxy Mineral Tombstone catalog. These tombstones are ideal for high speed machining centers where weight and accuracy are factors. *Epoxy Mineral* provides better vibration dampening effect than aluminum or cast iron.

Tolerances	Standard	Precision
Flatness (Tombstones & Plates)	.0005/12x12	.0005/12x12
Parallelism (Tombstones) 	.002/12	.0005/12 Min. .001, Max. .002/48
Parallelism (Plates) 	.0005/12 Max. .002 Total	.0005/12 Max. .002 Total
Perpendicularity 	.001/12	.0008/12 Min. .001, Max. .002/48
Surface Finish	63 RMS	63 RMS
Face Thickness	"≤30" = ±.002, >30" = ±.003"	"≤18" = ±.001, >18" = ±.002"
Tapped Holes (non accumulative)	±.005	±.005
Bore Diameter	-0 H8 +.001	-0 H7 +.0007
Precision Bushing I.D.	-0 H6 +.0004	-0 H6 +.0004
Precision Bushing Concentricity	0.0001	0.0001
Bored or Precision Bushing Hole to Adjacent Hole	±.0005	±.0005
First Row Bushing Hole Location from Datums	±.002	±.001
Bored or Precision Bushing Hole Spacing (non accumulative)	0-20 ±.0015 20-30 ±.002 30-40 ±.0025	0-20 ±.0005 20-30 ±.0008 30-40 ±.001

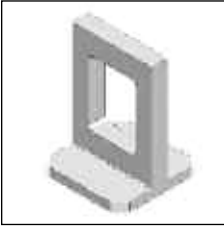
Index



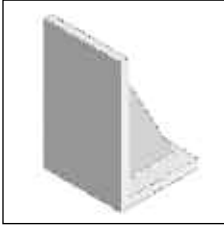
Cubes 4-7



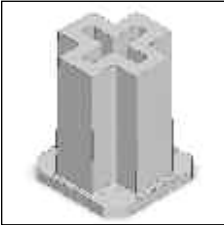
Double Angles 8-10



Window Frames 11



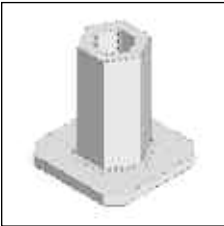
Single Angles 12-13



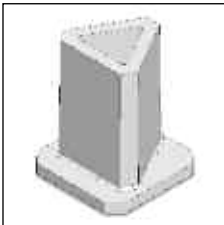
Cross Columns 14



Octagons 15



Hexagons 16-17



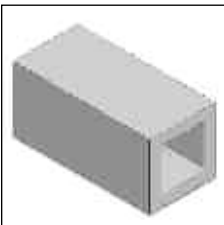
Triangles 18



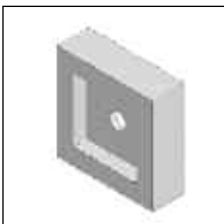
Y Tombstones 19



Plates 20



Risers 21



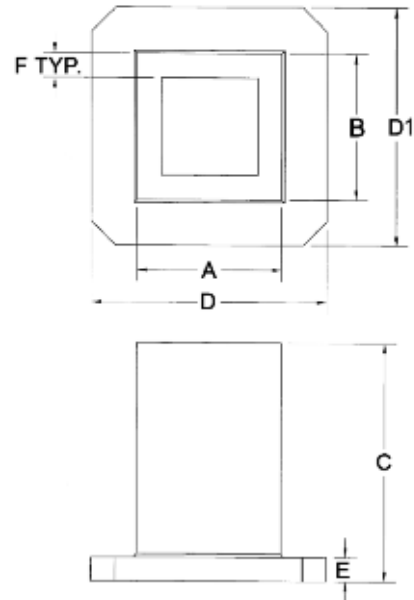
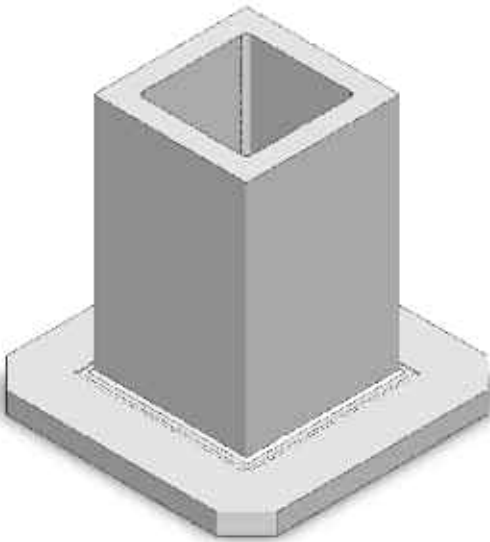
Consoles 22



Angle Blocks 23



Cubes



Note: Steel weldments are provided in any size upon request. (See page 2 for ordering information.) All weights are for plain face tombstones. Hole grid patterns with bushings and inserts, precisions T-slots or custom machining available upon request.

Dimensions to your specification if required.

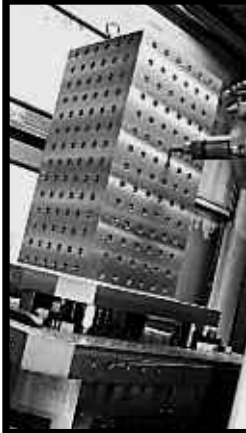
Plain Face Tombstone Model #	Cast Iron Weight (lbs.)	Aluminum Weight (lbs.)	A	B	C	D sq or D x D1	E	F
AMR-C060620-12	208	80	6	6	20	300 mm	1.5	2
AMR-C060624-16	284	109	6	6	24	400 mm	1.5	2
AMR-C060820-12	247	95	6	8	20	300 mm	1.5	2
AMR-C060824-16	331	127	6	8	24	400 mm	1.5	2
AMR-C061020-12	285	110	6	10	20	300 mm	1.5	2
AMR-C061024-16	378	145	6	10	24	400 mm	1.5	2
AMR-C061220-12	320	123	6	11.81	20	300 mm	1.5	2
AMR-C061224-16	424	163	6	12	24	400 mm	1.5	2
AMR-C061624-16	480	184	6	15.75	24	400 mm	1.5	2
AMR-C080818-12	272	105	8	8	18	300 mm	2	2
AMR-C080818-16	265	102	8	8	18	400 mm	1.5	2
AMR-C080820-16	328	126	8	8	20	400 mm	1.5	2
AMR-C080822-16	379	145	8	8	22	400 mm	2	2
AMR-C080824-16	404	155	8	8	24	400 mm	2	2
AMR-C080824-20	482	181	8	8	24	500 mm	2	2
AMR-C080825-16	419	161	8	8	25.25	400 mm	2	2
AMR-C080826-16	438	164	8	8	26	400 mm	2	2
AMR-C080826-20	509	191	8	8	26	500 mm	2	2
AMR-C080828-16	453	174	8	8	28	400 mm	2	2
AMR-C080828-20	536	201	8	8	28	500 mm	2	2
AMR-C081020-12	324	124	8	10	20	300 mm	1.5	2

CAD models are available at www.ame.com. CMM report is available upon request.

Cubes

Plain Face Tombstone Model #	Cast Iron Weight (lbs.)	Aluminum Weight (lbs.)	A	B	C	D sq or D x D1	E	F
AMR-C081015-16	321	120	8	10	15	400 mm	2	2
AMR-C081023-16	410	157	8	10	23	400 mm	1.5	2
AMR-C081024-16	430	161	8	10	24	400 mm	1.5	2
AMR-C081024-20	522	200	8	10	24	500 mm	2	2
AMR-C081025-16	432	166	8	10	24.5	400 mm	1.5	2
AMR-C081028-20	580	223	8	10	28	500 mm	2	2
AMR-C081221-20	509	196	8	12	20.5	500 mm	2	2
AMR-C081222-20	494	190	8	12	22	400 mm x 500 mm	2	2
AMR-C081224-16	479	180	8	12	24	400 mm	1.5	2
AMR-C081224-20	569	213	8	12	24	500 mm	2	2
AMR-C081226-20	605	227	8	12	26	500 mm	2	2
AMR-C081229-20	669	251	8	12	29	500 mm	2	2
AMR-C081630-20	784	301	8	16	30	500 mm	2	2
AMR-C081836-25	1142	428	8	18	36	630 mm	2	2
AMR-C090913-16	290	109	9	9	13	400 mm	2	2
AMR-C090924-20	531	199	9	9	24	500 mm	2	2
AMR-C081633-25	965	370	8	16	33	630 mm	2	2
AMR-C101017-25	525	202	10	10	16.5	630 mm	1.75	2
AMR-C101018-16	371	143	10	10	18	400 mm	1.5	2
AMR-C101021-16	437	168	10	10	20.5	400 mm	2	2
AMR-C101019-20	490	184	10	10	19	500 mm	2	2
AMR-C101024-16	471	181	10	10	24	400 mm	1.5	2
AMR-C101024-20	568	218	10	10	24	500 mm	2	2
AMR-C101024-25	685	263	10	10	24	630 mm	2	2
AMR-C101026-16	518	194	10	10	26	400 mm	1.5	2
AMR-C101026-20	572	219	10	10	25.5	500 mm	1.75	2
AMR-C101028-16	538	206	10	10	28	400 mm	1.5	2
AMR-C101028-20	634	243	10	10	28	500 mm	2	2
AMR-C101016-25	553	207	10	10	16	630 mm	2	2
AMR-C101026-25	718	269	10	10	26	630 mm	2	2
AMR-C101028-25	753	289	10	10	28	630 mm	2	2
AMR-C101030-25	804	301	10	10	30	630 mm	2	2
AMR-C101032-25	819	314	10	10	32	630 mm	2	2
AMR-C101036-25	898	337	10	10	36	630 mm	2	2
AMR-C101430-25	927	348	10	14	30	630 mm	2	2
AMR-C101624-16	627	241	10	15.75	24	400 mm	2	2
AMR-C101628-16	717	275	10	15.75	28	400 mm	2	2
AMR-C102024-20	789	303	10	19.68	24	500 mm	2	2
AMR-C102028-20	896	344	10	19.68	28	500 mm	2	2
AMR-C112018-23	716	275	11	19.5	18	23"	2	2
AMR-C121213-20	430	165	12	12	13	500 mm	2	2

CAD models are available at www.ame.com. CMM report is available upon request.



Cubes



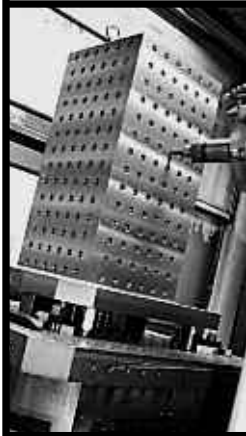
Plain Face Tombstone Model #	Cast Iron Weight (lbs.)	Aluminum Weight (lbs.)	A	B	C	D sq or D x D1	E	F
AMR-C121218-16	440	169	12	12	18	400 mm	1.5	2
AMR-C121219-20	545	209	12	12	18.5	500 mm	2	2
AMR-C121222-20	618	237	12	12	22	500 mm	2	2
AMR-C121224-16	587	225	12	12	24	400 mm	2	2
AMR-C121226-16	649	243	12	12	26	400 mm	2	2
AMR-C121224-20	659	253	12	12	24	500 mm	2	2
AMR-C121224-25	778	298	12	12	24	630 mm	2	2
AMR-C121225-16	605	232	12	12	25	400 mm	2	2
AMR-C121226-20	720	270	12	12	26	500 mm	2	2
AMR-C121228-20	742	285	12	12	28	500 mm	2	2
AMR-C121228-25	861	330	12	12	28	630 mm	2	2
AMR-C121230-25	902	346	12	12	30	630 mm	2	2
AMR-C121231-20	794	305	12	12	30.50	500 mm	2	2
AMR-C121232-20	857	321	12	12	32	500 mm	2	2
AMR-C121232-25	944	362	12	12	32	630 mm	2	2
AMR-C121236-25	1027	394	12	12	36	630 mm	2	2
AMR-C121624-16	672	258	12	15.75	24	400 mm	2	2
AMR-C121624-20	751	288	12	16	24	500 mm	2	2
AMR-C121624-25	869	334	12	16	24	630 mm	2	2
AMR-C121628-20	851	326	12	16	28	500 mm	2	2
AMR-C121630-25	1019	391	12	16	30	630 mm	2	2
AMR-C121632-25	1069	410	12	16	32	630 mm	2	2
AMR-C121824-25	915	351	12	18	24	630 mm	2	2
AMR-C121828-25	1023	393	12	18	28	630 mm	2	2
AMR-C121830-25	1077	413	12	18	30	630 mm	2	2
AMR-C121830-25-1	1017	390	12	18	30	20" x 25"	2	2
AMR-C121832-25	1131	434	12	18	32	630 mm	2	2
AMR-C121836-25	1295	485	12	18	36	630 mm	2	2
AMR-C121836-32	1459	547	12	18	36	800 mm	2	2
AMR-C121842-25	1479	555	12	18	42	630 mm	2	2
AMR-C122024-20	835	320	12	19.68	24	500 mm	2	2
AMR-C122028-20	950	365	12	19.68	28	500 mm	2	2
AMR-C122024-25	960	369	12	20	24	630 mm	2	2
AMR-C122030-25	1135	436	12	20	30	630 mm	2	2
AMR-C122524-25	1070	411	12	24.80	24	630 mm	2	2
AMR-C122530-25	1275	489	12	24.80	30	630 mm	2	2
AMR-C122532-25	1343	516	12	24.80	32	630 mm	2	2
AMR-C123226-32	1502	576	12	31.50	26	800 mm	2	2
AMR-C123232-32	1748	671	12	31.50	32	800 mm	2	2
AMR-C123234-32	2030	761	12	32	34	800 mm	2	2
AMR-C123238-32	1995	766	12	31.50	38	800 mm	2	2

CAD models are available at www.ame.com. CMM report is available upon request.

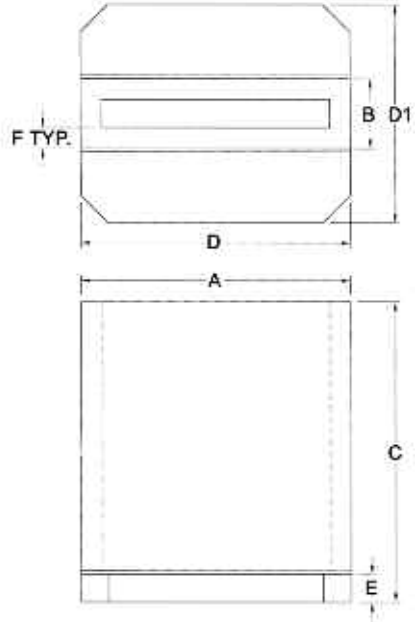
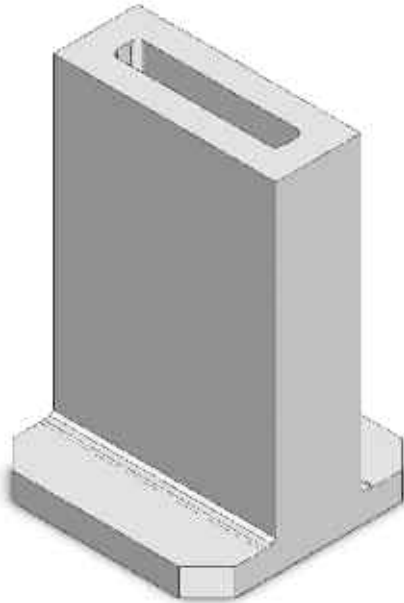
Cubes

Plain Face Tombstone Model #	Cast Iron Weight (lbs.)	Aluminum Weight (lbs.)	A	B	C	D sq or D x D1	E	F
AMR-C123243-32	2200	845	12	31.50	43	800 mm	2	2
AMR-C131330-22	904	347	13	13	30.50	22"	2	2
AMR-C141422-19	687	264	14	14	22	19"	2	2
AMR-C141424-25	869	334	14	14	24	630 mm	2	2
AMR-C141428-20	850	326	14	14	28	500 mm	2	2
AMR-C141428-25	996	374	14	14	28	630 mm	2	2
AMR-C141430-25	1019	391	14	14	30	630 mm	2	2
AMR-C141432-18	917	352	14	14	32	18"	2	2
AMR-C141432-25	1107	415	14	14	32	630 mm	2	2
AMR-C141436-25	1202	462	14	14	36	630 mm	2.25	2
AMR-C142034-32	1565	587	14	20	34	800 mm	2	2
AMR-C142524-25	1116	428	14	24.80	24	630 mm	2	2
AMR-C142532-25	1406	540	14	24.80	32	630 mm	2	2
AMR-C161624-25	961	369	16	16	24	630 mm	2	2
AMR-C161628-25	1077	413	16	16	28	630 mm	2	2
AMR-C161630-25	1135	436	16	16	30	630 mm	2	2
AMR-C161632-25	1240	465	16	16	32	630 mm	2	2
AMR-C161633-25	1223	469	16	16	33	630 mm	2	2
AMR-C162524-25	1162	446	16	24.80	24	630 mm	2	2
AMR-C162528-25	1315	505	16	24.80	28	630 mm	2	2
AMR-C162532-25	1468	564	16	24.80	32	630 mm	2	2
AMR-C163226-32	1602	615	16	31.50	26	800 mm	2	2
AMR-C163236-32	2054	788	16	31.50	36	800 mm	2	2
AMR-C163243-32	2371	910	16	31.50	43	800 mm	2	2
AMR-C181824-25	1052	404	18	18	24	630 mm	2	2
AMR-C181830-22	1218	457	18	18	30	550 mm	2	2
AMR-C181830-25	1252	481	18	18	30	630 mm	2	2
AMR-C181832-25	1318	506	18	18	32	630 mm	2	2
AMR-C181837-25	1485	570	18	18	37	630 mm	2	2
AMR-C182524-25	1208	464	18	24.80	24	630 mm	2	2
AMR-C182532-25	1531	588	18	24.80	32	630 mm	2	2
AMR-C202024-25	1144	439	20	20	24	630 mm	2	2
AMR-C202030-25	1368	525	20	20	30	630 mm	2	2
AMR-C202032-25	1443	554	20	20	32	630 mm	2	2
AMR-C202036-25	1675	628	20	20	36	630 mm	2	2
AMR-C202524-25	1254	481	20	24.80	24	630 mm	2	2
AMR-C202532-25	1593	611	20	24.80	32	630 mm	2	2
AMR-C222236-25	1830	686	22	22	36	630 mm	2	2
AMR-C222251-31	2630	1010	22	22	50.50	28" x 31"	2	2
AMR-C303047-32	3137	1204	30	30	47	800 mm	2	2
AMR-C303050-39	3602	1382	30	30	50	1000 mm	2	2

CAD models are available at www.ame.com. CMM report is available upon request.



Double Angles



Double Angles are useful when a larger surface is needed and also provides for two-sided machining.

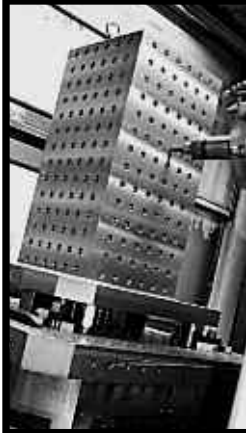
Note: Steel weldments are provided in any size upon request. (See page 2 for ordering information.) All weights are for plain face tombstones. Hole grid patterns with bushings and inserts, precisions T-slots or custom machining available upon request.

Dimensions to your specification if required.

Plain Face Tombstone Model #	Cast Iron Weight (lbs.)	Aluminum Weight (lbs.)	A	B	C	D sq or D x D1	E	F
AMR-D080216-12	110	41	8	2	16	300 mm	1.5	N/A
AMR-D090326-16	269	103	9	3	26	400 mm	1.5	N/A
AMR-D120316-12	188	72	11.80	3	16	300 mm	1.5	N/A
AMR-D120324-16	307	118	12	3	24	400 mm	1.5	N/A
AMR-D150318-15	296	111	15	3	18	15"	2	N/A
AMR-D160318-16	300	115	15.75	3	18	400 mm	1.5	N/A
AMR-D160319-16	332	127	15.75	3	18.5	400 mm	2	N/A
AMR-D160324-16	373	143	15.75	3	24	400 mm	1.5	N/A
AMR-D180324-16	413	158	18	3	24	400 mm	1.5	N/A
AMR-D190322-19	395	152	19.25	3	22	19.25" x 9.5"	2	N/A
AMR-D200324-20	539	207	19.68	3	24	500 mm	2	N/A
AMR-D100428-16	367	138	10	4	28	400 mm	1.5	N/A
AMR-D120422-16	370	139	12	4	22	400 mm	2	N/A
AMR-D120424-16	404	155	12	4	24	400 mm	2	N/A
AMR-D160423-16	443	170	15.75	4	23	400 mm	1.37	N/A
AMR-D160426-16	518	194	15.75	4	26	400 mm	2	N/A
AMR-D160428-16	551	207	15.75	4	28	400 mm	2	N/A
AMR-D160430-20	620	238	15.75	4	30	500 mm x 400 mm	2	N/A

Double Angles

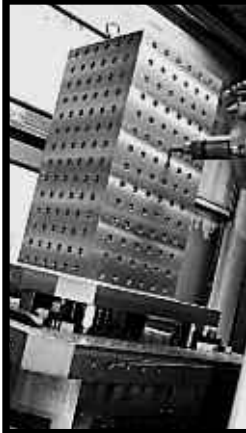
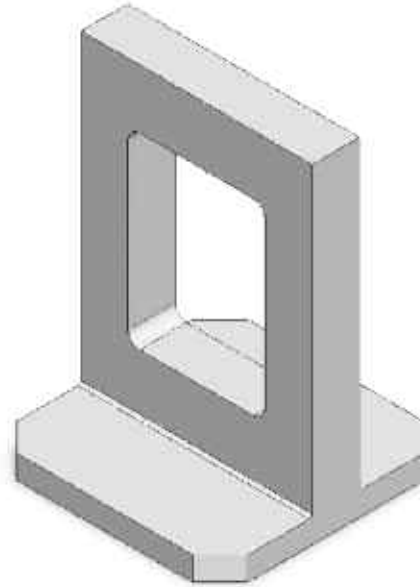
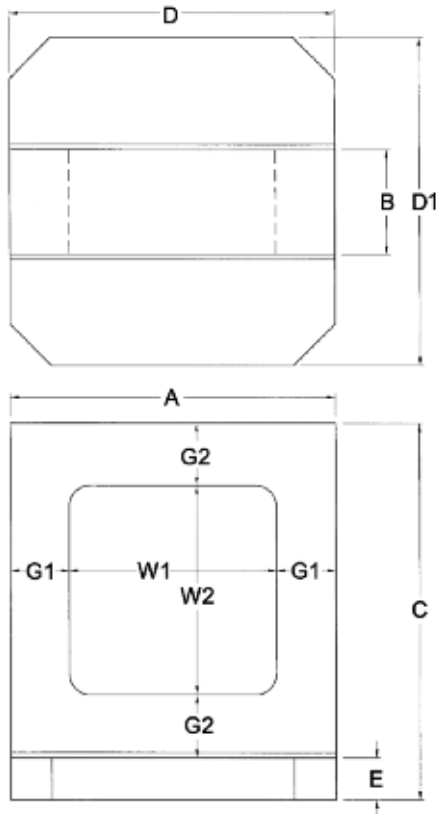
Plain Face Tombstone Model #	Cast Iron Weight (lbs.)	Aluminum Weight (lbs.)	A	B	C	D sq or D x D1	E	F
AMR-D180418-16	406	156	18	4	18	400 mm	1.5	N/A
AMR-D180424-16	518	200	18	4	24	400 mm	1.5	N/A
AMR-D200419-20	491	189	19.68	4	19	500 mm x 14"	2	N/A
AMR-D200424-20	652	250	19.68	4	24	500 mm	2	N/A
AMR-D200428-20	734	282	19.68	4	28	500 mm	2	N/A
AMR-D200428-25	861	330	20	4	28	630 mm	2	N/A
AMR-D200430-20	770	289	19.68	4	30	500 mm	2	N/A
AMR-D200430-25	902	346	20	4	30	630 mm	2	N/A
AMR-D200432-25	944	362	20	4	32	630 mm	2	N/A
AMR-D250425-25	726	279	24.50	4	24.5	24.5" x 12"	2	N/A
AMR-D250428-25	990	380	24.80	4	28	630 mm	2	N/A
AMR-D250430-25	1042	400	24.80	4	30	630 mm	2	N/A
AMR-D250432-25	1094	420	24.80	4	32	630 mm	2	N/A
AMR-D250432-32	1180	453	24.80	4	32	800 mm x 630 mm	2	N/A
AMR-D250436-32	1283	493	24.80	4	36	800 mm x 630 mm	2	N/A
AMR-D150522-18	559	214	15	5	22	18"	2	N/A
AMR-D150523-25	795	305	15	5	22.75	630 mm	2.5	N/A
AMR-D160525-16	567	218	15.75	5	24.5	400 mm	2	N/A
AMR-D160528-16	644	241	16	5	28	400 mm	1.5	N/A
AMR-D200522-20	667	256	19.68	5	21.75	500 mm x 400 mm	2	N/A
AMR-D200526-20	775	298	19.68	5	26	500 mm x 400 mm	2	N/A
AMR-D200528-20	814	312	19.68	5	27.5	500 mm x 400 mm	2	N/A
AMR-D200530-20	906	340	19.68	5	30	500 mm	2	N/A
AMR-D200534-20	1007	387	19.68	5	33.5	500 mm	2	N/A
AMR-D250522-25	958	359	24.80	5	22	630 mm	2	N/A
AMR-D250528-25	1158	445	24.80	5	28	630 mm	2	N/A
AMR-D250530-25	1223	469	24.80	5	30	630 mm	2	N/A
AMR-D250532-25	1287	494	24.80	5	32	630 mm	2	N/A
AMR-D250532-32	1381	530	25	5	32	800 mm x 630 mm	2	N/A
AMR-D250536-32	1511	580	25	5	36	800 mm x 630 mm	2	N/A
AMR-D320532-32	1635	628	31.50	5	32	800 mm x 630 mm	2	N/A
AMR-D320536-32	1799	690	31.50	5	36	800 mm x 630 mm	2	N/A
AMR-D120622-16	406	156	12	6	22	400 mm x 14"	2	2
AMR-D120623-16	411	158	12	6	22.25	400 mm	1.75	2
AMR-D120624-20	522	200	12	6	24	500 mm	2	2
AMR-D120628-20	580	223	12	6	28	500 mm	2	2
AMR-D120628-25	698	268	12	6	28	630 mm	2	2
AMR-D120632-25	757	290	12	6	32	630 mm	2	2
AMR-D160624-16	535	205	15.75	6	24	400 mm	2	2
AMR-D160624-20	613	235	16	6	24	500 mm	2	2



Double Angles

Plain Face Tombstone Model #	Cast Iron Weight (lbs.)	Aluminum Weight (lbs.)	A	B	C	D sq or D x D1	E	F
AMR-D160624-20-1	573	220	16	6	24	500 mm x 400 mm	2	2
AMR-D160628-20	688	264	16	6	28	500 mm	2	2
AMR-D160628-20-1	648	249	16	6	28	500 mm x 400 mm	2	2
AMR-D180632-18	793	304	18	6	32	18"	2	2
AMR-D200624-20	698	268	19.68	6	24	500 mm	2	2
AMR-D200628-20	788	302	19.68	6	28	500 mm	2	2
AMR-D200630-25	961	369	20	6	30	630 mm	2	2
AMR-D200632-20	894	335	20	6	31.5	500 mm	2	2
AMR-D200632-25	1006	386	20	6	32	630 mm	2	2
AMR-D200636-25	1098	421	20	6	36	630 mm	2	2
AMR-D220630-22	996	362	21.65	6	30	550 mm	2	2
AMR-D250629-25	974	374	24.80	6	29	630 mm x 19"	1.75	2
AMR-D250630-25	1100	422	24.80	6	30	630 mm	2	2
AMR-D250632-25	1156	444	24.80	6	32	630 mm	2	2
AMR-D250636-25	1268	487	24.80	6	36	630 mm	2	2
AMR-D250640-32	1473	566	25	6	40	800 mm x 630 mm	2	2
AMR-D320636-32	1591	611	31.50	6	36	800 mm x 630 mm	2	2
AMR-D320640-32	1730	664	31.50	6	40	800 mm x 630 mm	2	2
AMR-D140732-25	861	323	14	7	32	630 mm	2	2
AMR-D390739-39	2332	895	39	7	39	1000 mm	1.75	2
AMR-D390741-39	2304	884	38.50	7	41	38.5" x 31"	2	2
AMR-D130828-16	580	223	13	8	27.5	400 mm	2	2
AMR-D160836-20	890	341	15.75	8	36	500 mm x 400 mm	2.5	2
AMR-D200831-20	863	331	19.68	8	30.5	500 mm x 400 mm	2	2
AMR-D200834-20	977	375	19.68	8	33.5	500 mm	2	2
AMR-D200834-20-1	955	367	19.68	8	34.25	500 mm x 400 mm	2	2
AMR-D220830-22	1025	384	21.65	8	30	550 mm x 550 mm	2	2
AMR-D240824-26	817	314	24	8	24	26" x 16"	1.5	2
AMR-D250830-25	1236	474	25	8	30	25"	2.5	2
AMR-D250834-25	1398	524	24	8	34	630 mm	2	2
AMR-D250836-25	1338	514	24.80	8	36	630 mm	2	2
AMR-D250838-25	1536	576	24.80	8	38	630 mm	2	2
AMR-D280836-28	1510	580	28	8	36	28" x 26"	2	2
AMR-D310843-32	1880	722	31	8	42.5	800 mm x 630 mm	2	2
AMR-D320828-36	1385	531	31.50	8	27.5	35.5" x 24"	2	2
AMR-D320832-30	1573	604	31.50	8	32	30" x 630 mm	2.5	2
AMR-D320832-32	1454	558	31.50	8	31.5	800 mm x 630 mm	1.75	2
AMR-D320839-32	1928	723	31.5	8	39	800 mm	2	2
AMR-D410845-41	3255	1221	41	8	45	41" x 41"	2	2
AMR-D410855-41	3868	1450	41	8	55	41" x 41"	2	2
AMR-D281041-28	1922	721	28	10	41	28" x 25.3"	2	2
AMR-D391565-39	4553	1707	39	15	65	1000 mm	2	2

Window Frames



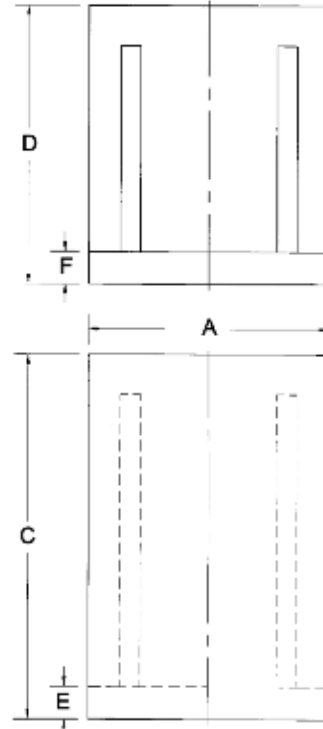
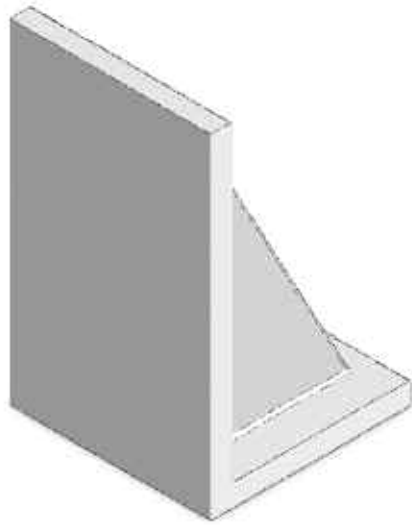
Window frame tombstones provide machining of parts in both front and back. It allows you to mount fixture plates on the front or back faces and also keeps the weight to a minimum.

Note: Steel weldments are provided in any size upon request. (See page 2 for ordering information.) All weights are for plain face tombstones. Hole grid patterns with bushings and inserts, precision T-slots or custom machining available upon request.

Dimensions to your specification if required.

Plain Face Tombstone Model #	Cast Iron Weight (lbs.)	Aluminum Weight (lbs.)	A	B	C	D sq or D x D1	W1	W2	G1	G2	E
AMR-W120318-12	143	55	11.81	3	18	300 mm	7.8	10.5	2	3	1.5
AMR-W160324-16	267	102	15.75	3	24	400 mm	9.75	14	3	4	1.5
AMR-W160424-16	323	124	15.75	4	24	400 mm	9.75	14	3	4	1.5
AMR-W200428-20	540	207	19.68	4	28	500 mm	11.68	16	4	5	2
AMR-W200528-20	624	239	19.68	5	28	500 mm	11.68	16	4	5	2
AMR-W250532-25	941	361	24.80	5	32	630 mm	14.8	18	5	6	2
AMR-W250632-25	1065	409	24.80	6	32	630 mm	14.8	18	5	6	2
AMR-W320840-32	2296	881	31.50	8	40	800 mm	15.5	22	8	8	2

Single Angles



Offset single angles are available upon request.

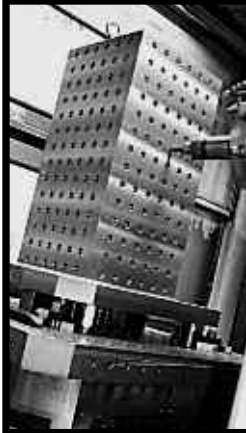
Note: Steel weldments are provided in any size upon request. (See page 2 for ordering information.) All weights are for plain face tombstones. Hole grid patterns with bushings and inserts, precisions T-slots or custom machining available upon request.

Dimensions to your specification if required.

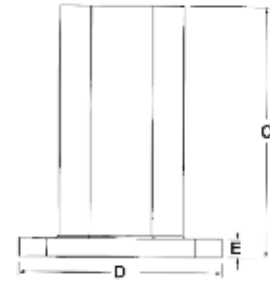
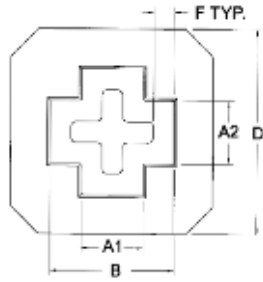
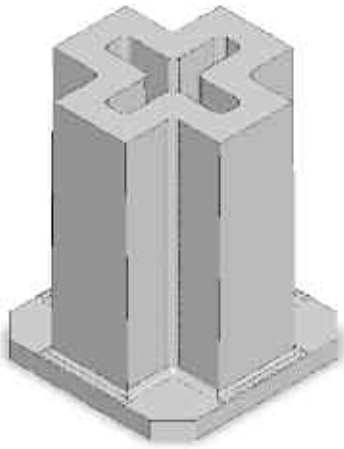
Plain Face Model #	Cast Iron Weight (lbs.)	Aluminum Weight (lbs.)	A	C	D	E	F
AMR-S0306-06	17	6	3	6	6	1.6	1.6
AMR-S0308-08	26	10	3	8	8	1.6	1.6
AMR-S0310-08	31	12	3	10	8	1.6	1.6
AMR-S0312-09	40	16	3	12	9	1.6	1.6
AMR-S0316-09	52	20	3	16	9	1.6	1.6
AMR-S0404-04	10	4	4	4	4	1	1
AMR-S0406-06	20	8	4	6	6	1.6	1.6
AMR-S0407-05	12	5	4	7	4.5	1	1
AMR-S0408-08	34	12	4	8	8	1.6	1.6
AMR-S0410-08	36	14	4	10	8	1.6	1.6
AMR-S0412-09	46	18	4	12	9	1.6	1.6
AMR-S0416-10	63	24	4	16	10	1.6	1.6
AMR-S0420-10	86	33	4	20	10	2	2
AMR-S0610-08	45	17	6	10	8	1.6	1.6

Single Angles

Plain Face Model #	Cast Iron Weight (lbs.)	Aluminum Weight (lbs.)	A	C	D	E	F
AMR-S0612-10	62	24	6	12	10	1.6	1.6
AMR-S0616-10	76	29	6	16	10	1.6	1.6
AMR-S0812-10	73	28	8	12	10	1.6	1.6
AMR-S0816-10	89	34	8	16	10	1.6	1.6
AMR-S0820-14	137	52	8	20	14	1.6	1.6
AMR-S0833-18	302	113	8	33	18	2	2
AMR-S0840-18	359	138	8	40	18	2.25	2.25
AMR-S1214-06	95	36	12	14	5.5	1.62	1.62
AMR-S1218-14	160	62	12	18	14	1.6	1.6
AMR-S1219-10	158	61	12	18.75	10	2	2
AMR-S1224-15	248	95	12	24	15	2	2
AMR-S1230-15	290	112	12	30	15	2	2
AMR-S1239-15	350	134	12	38.5	15	2	2
AMR-S1240-18	487	187	12	40	17.75	2.5	2.5
AMR-S1615-12	181	70	16	15	12	2	1.75
AMR-S1620-14	257	99	16	20	14	2	2
AMR-S1624-18	341	131	16	24	17.75	2	2
AMR-S1630-18	397	153	16	30	18	2	2
AMR-S1717-14	196	75	17	17	14	1.6	1.6
AMR-S1816-13	187	72	18	16	13	1.6	1.6
AMR-S1822-13	283	109	18	22	13	2	2
AMR-S1824-15	329	126	18	24	15	2	2
AMR-S1830-18	431	165	18	30	18	2	2
AMR-S2026-15	374	144	20	26	15	2	2
AMR-S2030-18	464	178	20	30	18	2	2
AMR-S2230-18	497	191	22	30	18	2	2
AMR-S2424-12	253	97	24	24	12	1.5	1.5
AMR-S2430-18	530	204	24	30	18	2	2
AMR-S2448-18	920	353	24	48	18	2.5	2.5
AMR-S3030-18	802	308	30	30	18	2.5	2.5
AMR-S3040-24	1141	438	30	40	24	2.5	2.5
AMR-S3248-31	1410	541	32	48	30.5	2.25	2.25
AMR-S4237-24	1436	551	42	37	24	2.5	2.5



Cross Columns



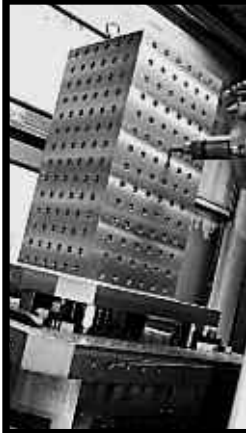
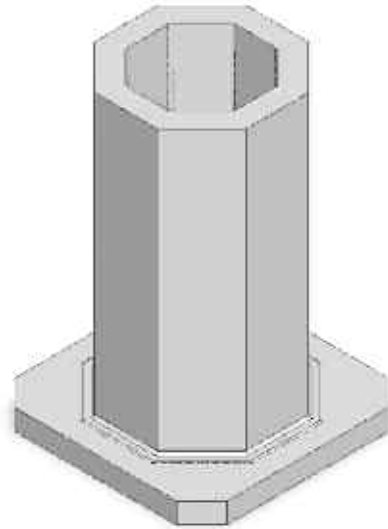
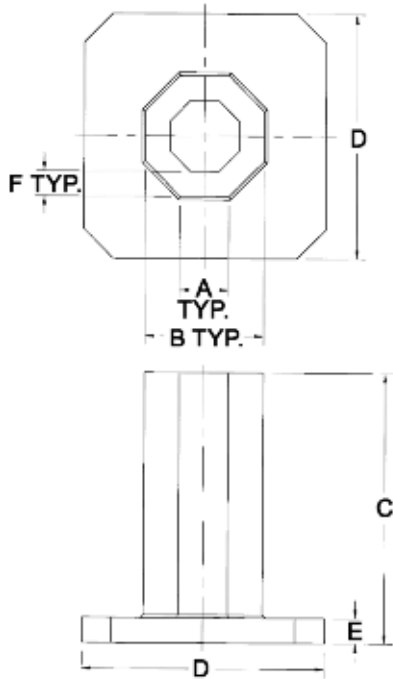
Cross Tombstones provide minimum tool clearance to allow your work to be close to the spindle. They also give you the ability to do three sided machining of your work piece. Based upon your application, corner faces could also be used to mount parts.

Note: All weights are for plain face tombstones. Hole grid patterns with bushings and inserts, precisions T-slots or custom machining available upon request.

Dimensions to your specification if required.

Plain Face Tombstone Model #	Cast Iron Weight (lbs.)	Aluminum Weight (lbs.)	A1	A2	B	C	D	E	F
AMR-K03030918-12	247	94	3	3	9	18	300 mm	1.5	N/A
AMR-K03040918-12	273	104	3	4	9	18	300 mm	1.5	N/A
AMR-K04041024-16	471	181	4	4	10	24	400 mm	1.5	N/A
AMR-K04041026-16	520	195	4	4	10	26	400 mm	1.5	N/A
AMR-K04041026-20	573	215	4	4	10	26	500 mm	1.5	N/A
AMR-K04041232-25	864	324	4	4	12	32	630 mm	1.5	N/A
AMR-K04041426-16	733	275	4	4	14	26	400 mm	1.5	N/A
AMR-K04041632-20	994	373	4	4	16	32	500 mm	2	2
AMR-K04051124-16	559	215	4	5	11	24	400 mm	1.5	N/A
AMR-K04051228-20	796	306	4	5	12	28	500 mm	2	N/A
AMR-K05051224-16	652	250	5	5	12	24	400 mm	1.5	N/A
AMR-K05051228-20	844	324	5	5	12	28	500 mm	2	N/A
AMR-K05061224-16	693	266	5	6	12	24	400 mm	1.5	N/A
AMR-K05061228-20	891	342	5	6	12	28	500 mm	2	N/A
AMR-K06061420-16	585	220	6	6	14	20	400 mm	1.5	2
AMR-K06061424-16	658	253	6	6	14	24	400 mm	1.5	2
AMR-K06061428-20	903	339	6	6	14	28	500 mm	2	2
AMR-K06061628-20	959	368	6	6	16	28	500 mm	2	2
AMR-K06061628-25	1142	428	6	6	16	28	630 mm	2	2
AMR-K06061658-25	2250	844	6	6	16	58	630 mm	2	2
AMR-K06061632-25	1195	458	6	6	16	32	630 mm	2	2
AMR-K06061658-25	2250	844	6	6	16	58	630 mm	2	2
AMR-K06081828-20	1067	410	6	8	18	28	500 mm	2	2
AMR-K06081832-25	1318	506	6	8	18	32	630 mm	2	2
AMR-K08081828-20	1067	410	8	8	18	28	500 mm	2	2
AMR-K08081832-32	1488	558	8	8	18	32	800 mm	2	2
AMR-K08081832-25	1318	506	8	8	18	32	630 mm	2	2
AMR-K08102032-25	1443	554	8	10	20	32	630 mm	2	2
AMR-K10102232-25	1568	602	10	10	22	32	630 mm	2	2
AMR-K12122440-32	2255	866	12	12	24	40	800 mm	2	2

Octagons



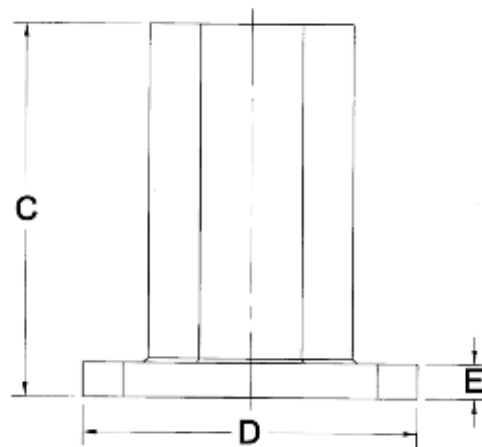
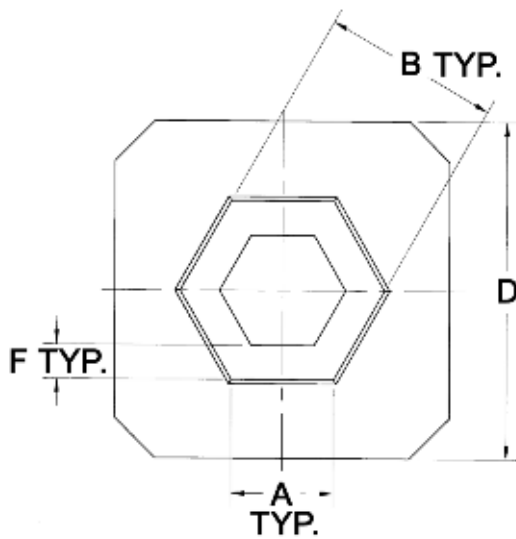
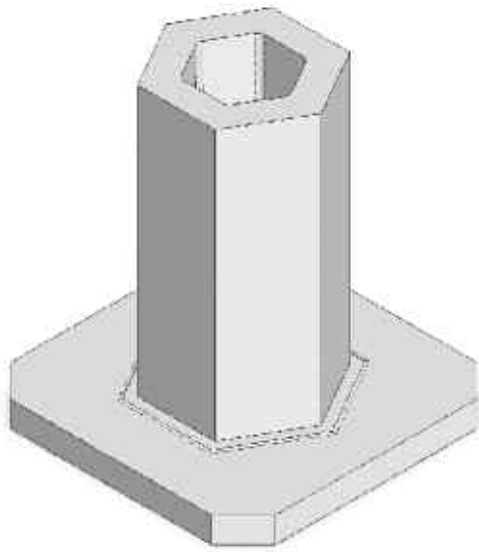
Octagon tombstones provide for high density work holding of parts.

Note: Steel weldments are provided in any size upon request. (See page 2 for ordering information.) All weights are for plain face tombstones. Hole grid patterns with bushings and inserts, precisions T-slots or custom machining available upon request.

Dimensions to your specification if required.

Plain Face Tombstone Model #	Cast Iron Weight (lbs.)	Aluminum Weight (lbs.)	A	B	C	D	E	F
AMR-O030818-12	224	86	3.31	8	18	300 mm	1.5	2
AMR-O041018-12	281	108	4.14	10	18	300 mm	1.5	2
AMR-O041022-20	466	179	4.00	9.66	22	500 mm	2	2
AMR-O041024-16	407	156	4.14	10	24	400 mm	1.5	2
AMR-O041028-16	475	178	4.14	10	28	400 mm	1.5	2
AMR-O041028-20	560	215	4.14	10	28	500 mm	2	2
AMR-O051224-16	485	186	4.97	12	24	400 mm	1.5	2
AMR-O051228-20	650	249	4.97	12	28	500 mm	2	2
AMR-O051239-20	911	341	4.97	12	39	500 mm	2.5	2
AMR-O061424-16	563	216	5.80	14	24	400 mm	1.5	2
AMR-O061428-20	740	284	5.80	14	28	500 mm	2	2
AMR-O061432-25	940	361	5.78	14	32	630 mm	2	2
AMR-O071828-20	916	351	7.45	18	28	500 mm	2	2
AMR-O071832-25	1143	439	7.45	18	32	630 mm	2	2
AMR-O082028-25	1124	431	8.28	20	28	630 mm	2	2
AMR-O082032-25	1247	480	8.28	20	32	630 mm	2	2
AMR-O092232-25	1351	519	9.11	22	32	630 mm	2	2
AMR-O092240-32	1823	700	9.11	22	40	800 mm	2	2
AMR-O122840-32	2220	852	11.60	28	40	800 mm	2	2

Hexagons



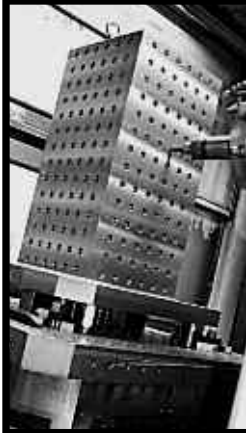
Hexagon tombstones provide for high density work holding while still providing clearances for three sided machining.

Note: Steel weldments are provided in any size upon request. (See page 2 for ordering information.) All weights are for plain face tombstones. Hole grid patterns with bushings and inserts, precisions T-slots or custom machining available upon request.

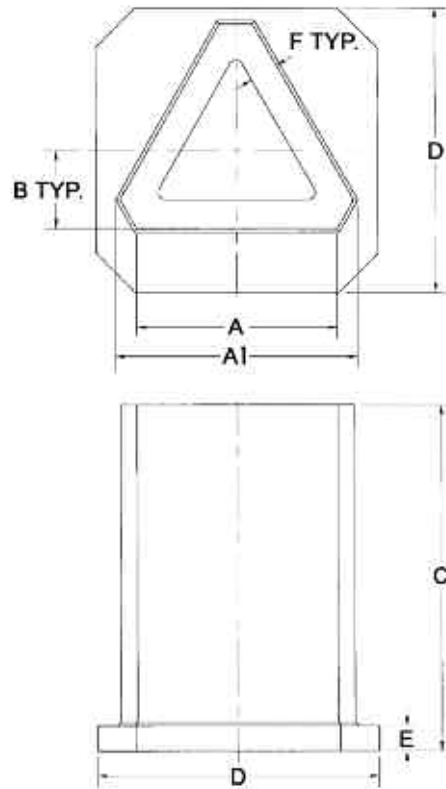
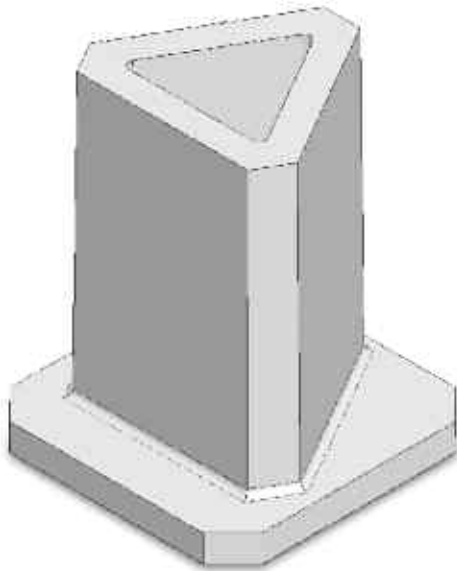
Dimensions to your specification if required.

Hexagons

Plain Face Tombstone Model #	Cast Iron Weight (lbs.)	Aluminum Weight (lbs.)	A	B	C	D	E	F
AMR-H030518-12	149	57	2.89	5	18	300 mm	1.5	NA
AMR-H040718-12	203	78	4.04	7	18	300 mm	1.5	2
AMR-H040724-16	299	115	4.04	7	24	400 mm	1.5	2
AMR-H050918-12	263	101	5.20	9	18	300 mm	1.5	2
AMR-H050924-16	380	146	5.20	9	24	400 mm	1.5	2
AMR-H050928-20	530	204	5.20	9	28	500 mm	2	2
AMR-H061018-12	293	112	5.78	10	18	300 mm	1.5	2
AMR-H061022-20	491	189	5.78	10	22	500 mm	2	2
AMR-H061024-16	423	162	5.78	10	24	400 mm	1.5	2
AMR-H061028-20	578	222	5.78	10	28	500 mm	2	2
AMR-H061032-25	754	290	5.78	10	32	630 mm	2	2
AMR-H071224-16	503	193	6.93	12	24	400 mm	1.5	2
AMR-H071228-20	671	257	6.93	12	28	500 mm	2	2
AMR-H071232-25	861	330	6.93	12	32	630 mm	2	2
AMR-H081424-16	586	225	8.09	14	24	400 mm	1.5	2
AMR-H081428-20	766	294	8.09	14	28	500 mm	2	2
AMR-H081432-25	971	373	8.09	14	32	630 mm	2	2
AMR-H091624-20	665	256	9.24	16	24	500 mm	1.5	2
AMR-H091624-25	893	335	9.24	16	24	630 mm	2	2
AMR-H091628-20	858	329	9.24	16	28	500 mm	2	2
AMR-H091632-25	1077	414	9.24	16	32	630 mm	2	2
AMR-H091636-25	1227	460	9.24	16	36	630 mm	2	2
AMR-H101828-20	954	366	10.40	18	28	500 mm	2	2
AMR-H101832-25	1188	456	10.40	18	32	630 mm	2	2
AMR-H111928-20	998	383	10.97	19	28	500 mm	2	2
AMR-H111932-25	1239	475	10.97	19	32	630 mm	2	2
AMR-H122132-25	1349	518	12.13	21	32	630 mm	2	2
AMR-H122140-32	1820	699	12.13	21	40	800 mm	2	2
AMR-H142440-32	2024	777	13.86	24	40	800 mm	2	2
AMR-H162840-32	2300	883	16.17	28	40	800 mm	2	2



Triangles



For those special applications where more surface area is required without sacrificing tool clearance.

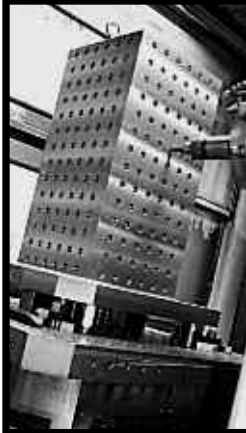
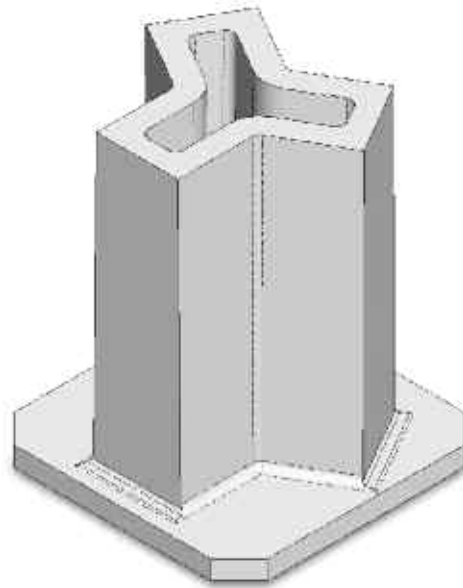
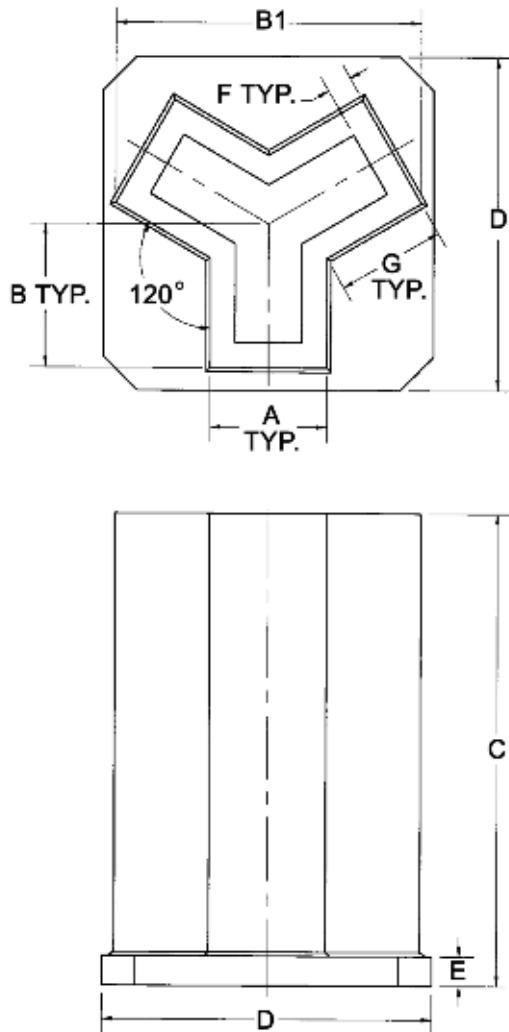
Note: Steel weldments are provided in any size upon request. (See page 2 for ordering information.) All weights are for plain face tombstones. Hole grid patterns with bushings and inserts, precisions T-slots or custom machining available upon request.

Dimensions to your specification if required.

Plain Face Tombstone Model #	Cast Iron Weight (lbs.)	Aluminum Weight (lbs.)	A	A1	B	C	D	E	F
AMR-T0628-16	260	98	6	6.87	2.232	28	400 mm	1.5	N/A
AMR-T0818-12	230	87	8	9.33	3.08	18	300 mm	1.5	2
AMR-T0824-16	336	127	8	9.33	3.08	24	400 mm	1.5	2
AMR-T1024-16	406	153	10	11.67	3.85	24	400 mm	1.5	2
AMR-T1028-20	559	211	10	11.67	3.85	28	500 mm	2	2
AMR-T1224-16	477	180	12	14.00	4.62	24	400 mm	1.5	2
AMR-T1228-20	641	242	12	14.00	4.62	28	500 mm	2	2
AMR-T1232-25	826	312	12	14.00	4.62	32	630 mm	2	2
AMR-T1424-20	621	234	14	16.32	5.38	24	500 mm	1.75	2
AMR-T1628-20	803	303	16	18.67	6.16	28	500 mm	2	2
AMR-T1632-25	1014	382	16	18.67	6.16	32	630 mm	2	2
AMR-T2032-32	1397	526	20	23.34	7.70	32	800 mm	2	2

CAD models are available at www.ame.com. CMM report is available upon request.

Y Tombstones



“Y” Tombstones are ideal for three sided machining without sacrificing tool clearance. Based upon your application, corner faces could also be used to mount parts.

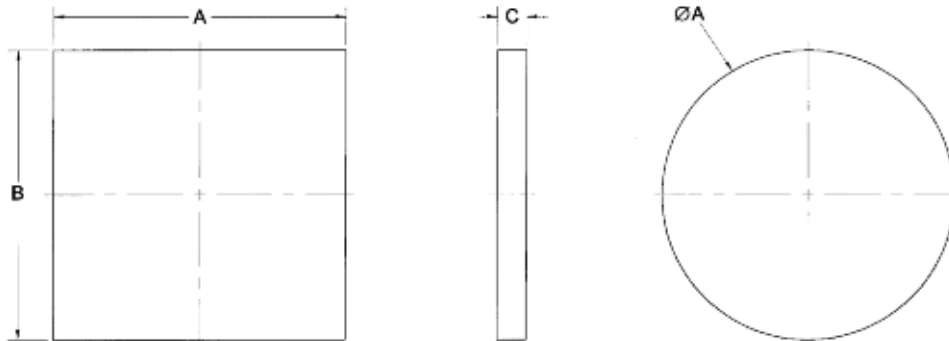
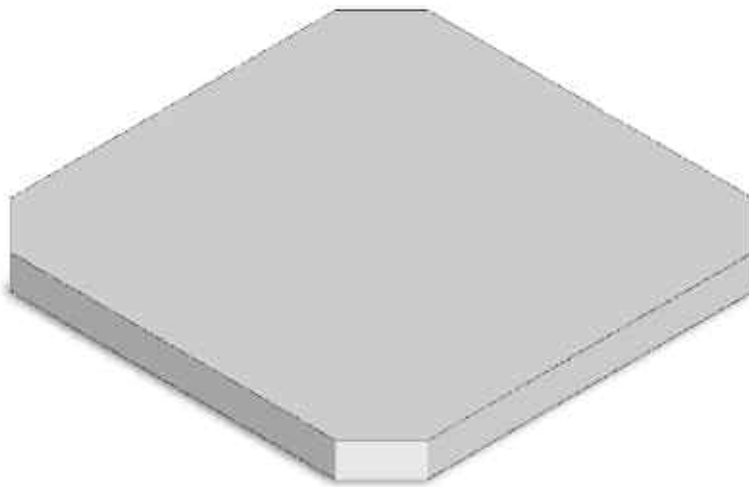
Note: Steel weldments are provided in any size upon request. (See page 2 for ordering information.) All weights are for plain face tombstones. Hole grid patterns with bushings and inserts, precisions T-slots or custom machining available upon request.

Dimensions to your specification if required.

Plain Face Tombstone Model #	Cast Iron Weight (lbs.)	Aluminum Weight (lbs.)	A	B	B1	C	D	E	F	G
AMR-Y041224-16	478	180	4	6	12.39	24	400 mm	1.5	N/A	4.85
AMR-Y061728-20	838	316	6	8	16.86	28	500 mm	2	2	6.27
AMR-Y071828-20	725	273	7	8.52	18.26	28	500 mm	1.75	1.5	6.5
AMR-Y071828-25	892	335	7	8.52	18.26	28	630 mm	1.75	1.5	6.5
AMR-Y082130-25	1161	437	8	10	21.32	30	630 mm	2	2	7.69

CAD models are available at www.ame.com. CMM report is available upon request.

Plates

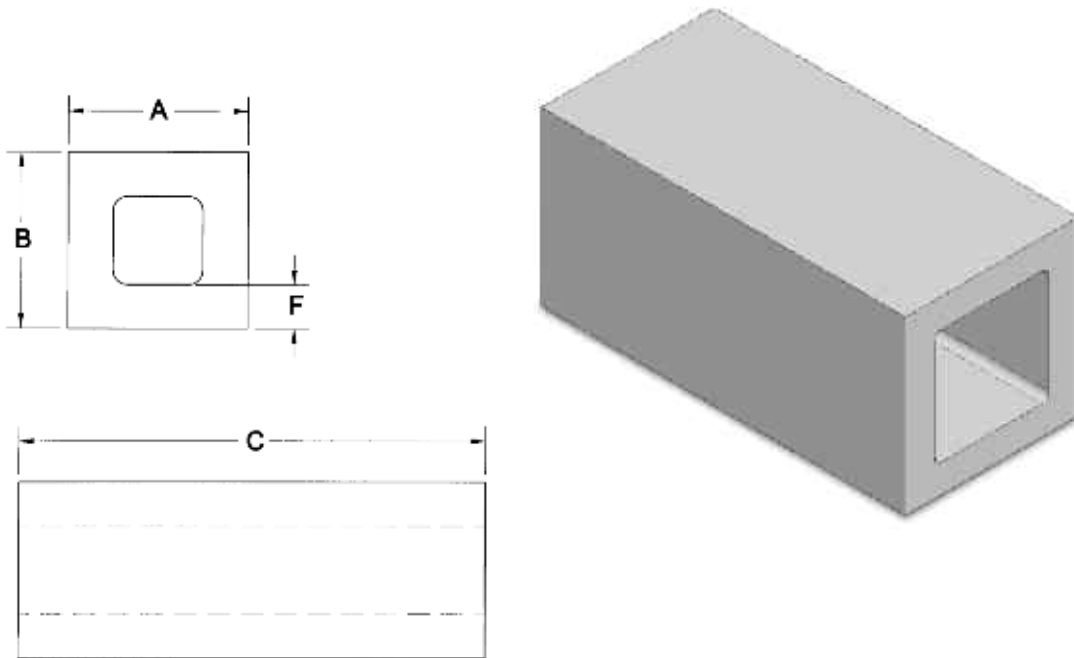


Sub plates and riser plates are built to fit your application.

Note: corner chamfers provided upon request. Plates are provided in any size. Please specify your length, width, height, and type of material (cast iron, steel, or aluminum). See page 2 for tolerances and options. All weights are for plain face tombstones. Hole grid patterns with bushings and inserts, precisions T-slots or custom machining available upon request.

Dimensions to your specification if required.

Risers



All risers are made to fit your specific application needs. These risers are ideal to compensate spindle clearance to raise your work piece off the table for four sided machining of work piece.

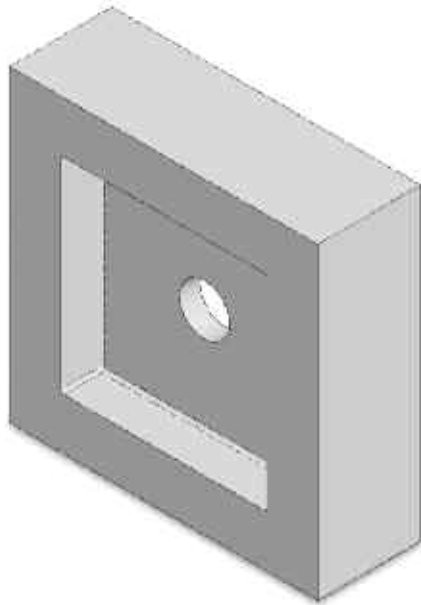
Note: Steel weldments are provided in any size upon request. (See page 2 for ordering information.)

Dimensions to your specification if required.

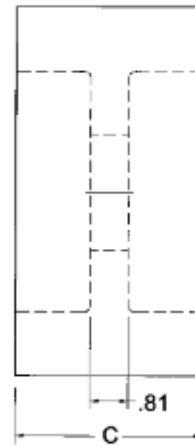
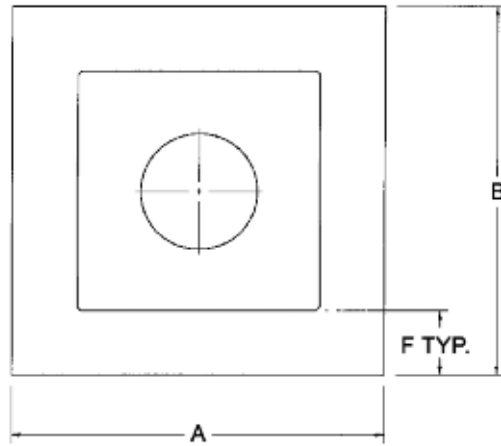
Plain Face Model #	Cast Iron Weight (lbs.)	Aluminum Weight (lbs.)	A	B	C	F
AMR-R0606-16	117	45	6	6	400 mm	1.63
AMR-R0606-20	146	56	6	6	500 mm	1.63
AMR-R0606-25	184	71	6	6	630 mm	1.63
AMR-R0606-32	233	90	6	6	800 mm	1.63
AMR-R0808-16	197	75	8	8	400 mm	2
AMR-R0808-20	246	94	8	8	500 mm	2
AMR-R0808-25	310	119	8	8	630 mm	2
AMR-R0808-32	393	151	8	8	800 mm	2
AMR-R1010-16	262	101	10	10	400 mm	2
AMR-R1010-20	328	126	10	10	500 mm	2
AMR-R1010-25	413	158	10	10	630 mm	2
AMR-R1010-32	524	201	10	10	800 mm	2
AMR-R1212-16	328	126	12	12	400 mm	2
AMR-R1212-20	410	157	12	12	500 mm	2
AMR-R1212-25	516	198	12	12	630 mm	2
AMR-R1212-32	655	251	12	12	800 mm	2

CAD models are available at www.ame.com. CMM report is available upon request.

Consoles



Console shown with precision bushings and threaded inserts



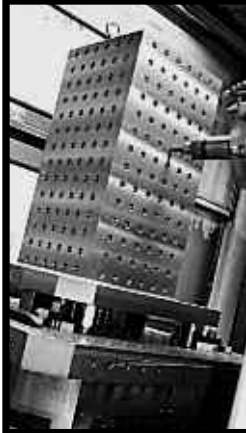
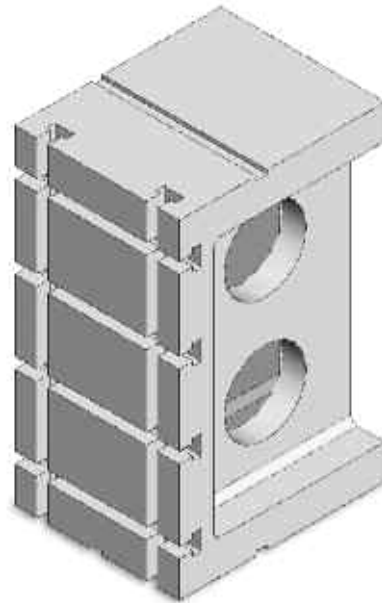
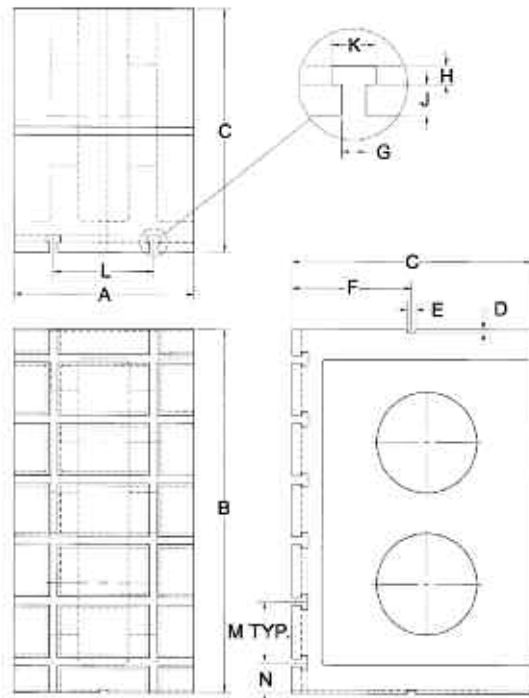
Consoles are used to obtain various support heights.

Note: Steel weldments are provided in any size upon request. (See page 2 for ordering information.) All weights are for plain face tombstones. Hole grid patterns with bushings and inserts, precision T-slots or custom machining available upon request.

Dimensions to your specification if required.

Plain Face Model #	Cast Iron Weight (lbs.)	Aluminum Weight (lbs.)	A	B	C	F
AMR-F0606-04	29	11	6	6	4	1.5
AMR-F0806-04	36	14	8	6	4	1.5
AMR-F0808-04	45	17	8	8	4	1.5
AMR-F1010-04	73	28	10	10	4	2
AMR-F1212-04	96	37	12	12	4	2

Angle Blocks



Angle blocks provide the rigidity necessary for precision machining of either right angles or parallel surfaces to the machine spindle. Vertical and horizontal T-slots are provided on the face of the angle block for convenience in mounting or locating the work piece. Keyways are precision machined in the top and bottom of the angle blocks for locating to the table and/or locating one block on top of another or side by side when added height or width is required.

Note: Full grid or custom configuration are available as an option. Steel weldments are provided in any size upon request. (See page 2 for ordering information.) All weights are for plain face tombstones. Hole grid patterns with bushings and inserts, precisions T-slots or custom machining available upon request.

Dimensions to your specification if required.

Model #	Cast Iron Weight (lbs.)	A	B	C	D	E	F	G	H	J	K	L	M	N
AMR-A1212-15	300	12	12	15	9/32	.812/.813	6.000/5.999	.812/.813	5/8	1	1 15/32	8	6	3
AMR-A1224-15	500	12	24	15	9/32	.812/.813	6.000/5.999	.812/.813	5/8	1	1 15/32	8	6	3
AMR-A1836-24	1350	18	36	24	9/32	.812/.813	12.000/11.999	.812/.813	5/8	1	1 15/32	10	6	3
AMR-A2448-30	2200	24	48	30	17/64	.812/.813	12.000/11.999	.812/.813	5/8	1	1 15/32	12	6	3
AMR-A2448-30-1	2200	24	48	30	17/64	.812/.813	12.000/11.999	1.062/1.063	13/16	1 1/4	1 13/16	12	6	3
AMR-A3672-45	6200	36	72	45	17/64	1.062/1.063	12.000/11.999	1.062/1.063	13/16	1 1/4	1 13/16	12	12	6

Innovative People, Products and Processes

At AME, innovation is part of our culture. You can see the result in our processes, partnerships, people and services—and in the precision engineered components, machines and services showcased here. To learn more about AME and our innovative approach to precision machining, please call **815-962-6076** or visit **www.ame.com** today.



Perfect Machine Protection. For 50 years, AME's sister company, Hennig, has been designing and producing custom machine protection and chip/coolant management products for state-of-the-art machine tools. Hennig products are reliable, durable, and perfectly tailored to protect against corrosion, debris and common workplace contaminants. There's no better way to protect your investment on the shop floor. Visit **www.hennigworldwide.com**.

|||||HENNIG
perfect machine protection.

 **ADVANCED
MACHINE & ENGINEERING CO.**

