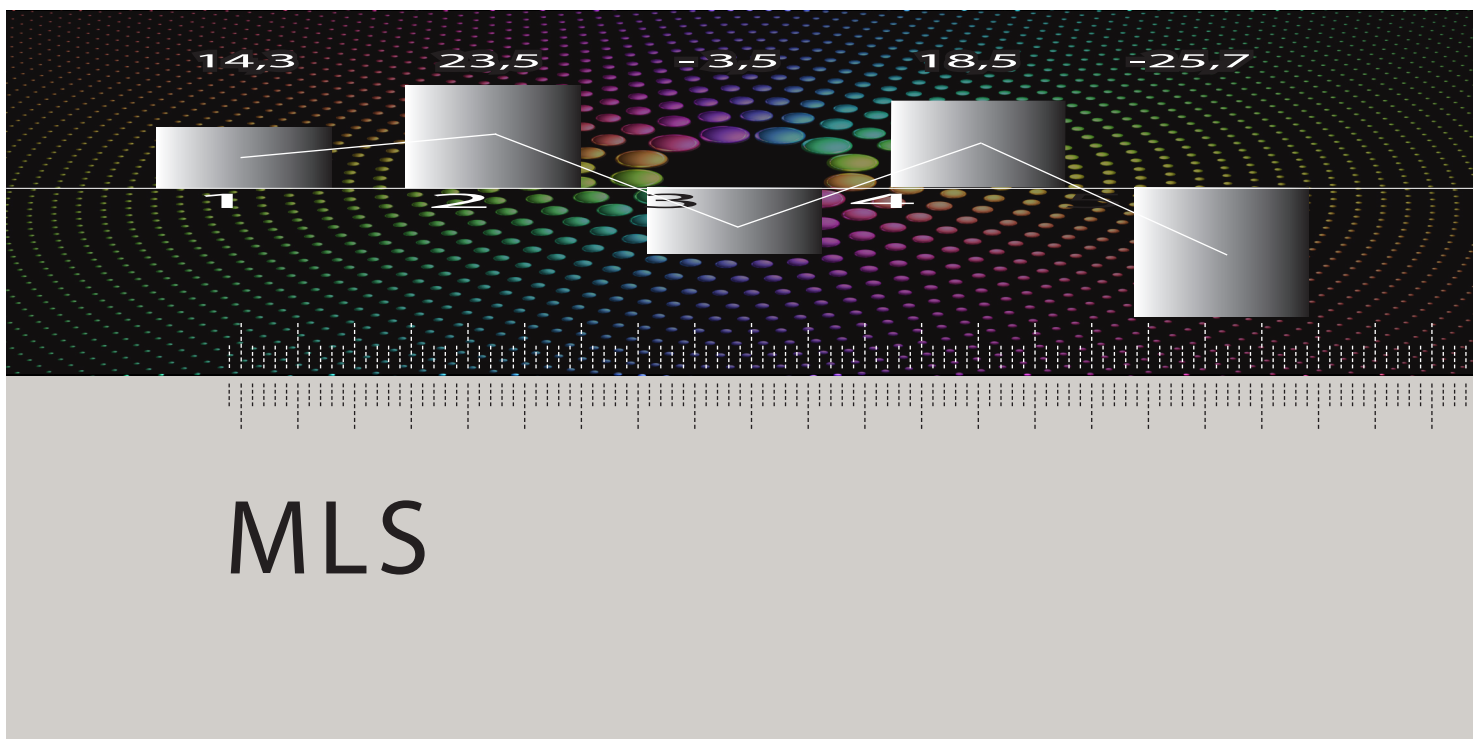




Micro-Illuminated-Column MLS

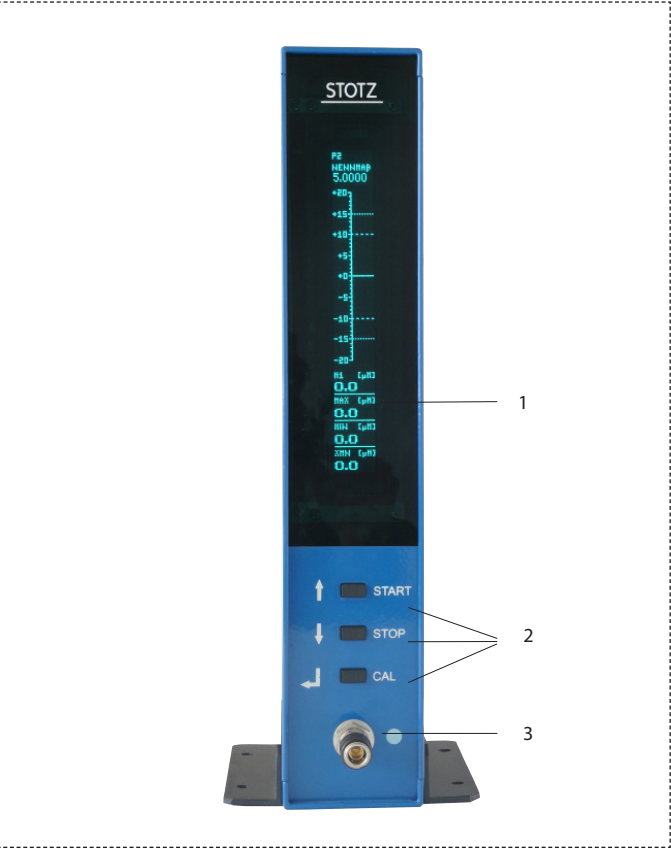


MLS

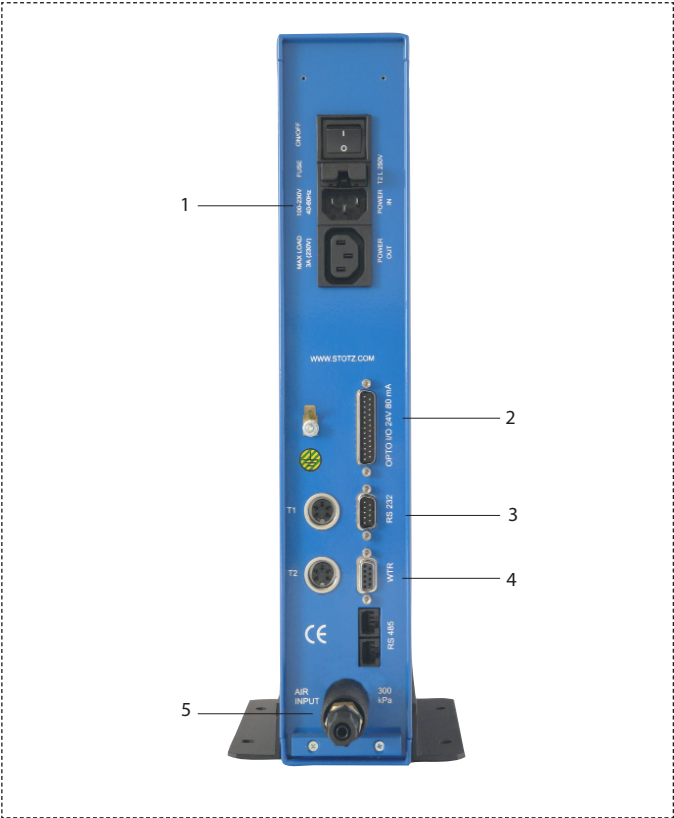
description

The Micro Illuminated Column is designed for simple duties with high precision measuring. The simplified design allows for manual or automatic operation and for quick solution.

- gauging and controls by in-process and post-process
- pneumatic diameter measurement
- minimal air consumption while, holding high measuring stability
- easy to operate
- ability to network MLS or MSG columns together, with output going to one location



position	description
1	graphic display
2	operator keyboard
3	connection for measuring tool



position	description
1	power supply
2	8 x I/O opto interface
3	serial interface RS232
4	connection for operator box
5	input measuring air

technical data MLS

basic device

power supply	100-230 V AC; 65W; 42-60 Hz
graphic display	32 x 256 Pixel
measuring programs	4
connection for operating box	available
serial interface	RS232 COM1
digital input/output 24V; 4 mA	8 x I/O opto
pneumat. measuring channel	1
Ingress Protection	IP 52
dimensions	2,83 x 15,24 x 6,38 inch/72x387x162 mm

modular device equipment

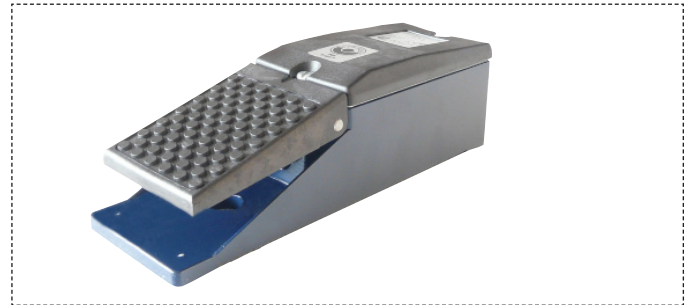
operating box	WTMSG2
foot switch	

operating box WTMSG2

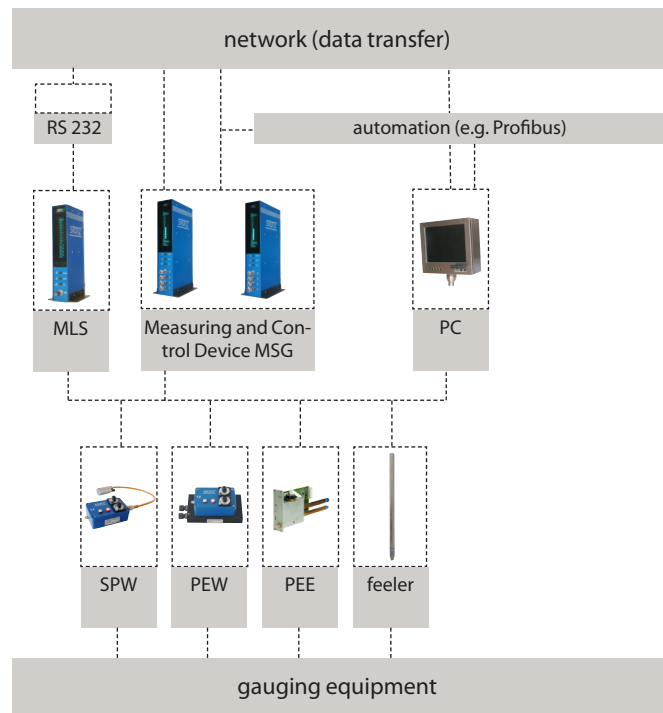


position	description
1	mode switch for measuring program selection
2	manual calibration selection
3	program Start/Stop

foot switch



network



9 offices worldwide

USA

Advanced Machine & Engineering Company
– sales- and service-branch

Germany

STOTZ Feinmesstechnik GmbH
– head office
– 4 sales- and service-offices

France

STOTZ France
– sales- and service-branch

Italy

STOTZ Italia
– sales- and service-branch

Czech Republic, Slovakia

STOTZ Slowakei
– sales- and service-branch



Advanced Machine & Engineering Company
2500 N. Latham Street
Rockford, Illinois 61103

Phone (815) 962-6076
Fax (815) 962-6483
info@ame.com www.ame.com/stotz