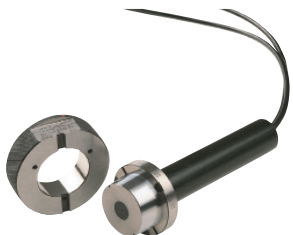


Pneumatic Measurement



- Very Robust
- Especially suitable for wet parts
- Highest accuracy
- Diameter to 0,8 mm
- Many measuring points in a confined space



9 offices worldwide

USA
Advanced Machine & Engineering Company
– sales- and service-branch

Germany
STOTZ Feinmesstechnik GmbH
– head office
– 4 sales- and service-offices

France
STOTZ France
– sales- and service-branch

Italy
STOTZ Italia
– sales- and service-branch

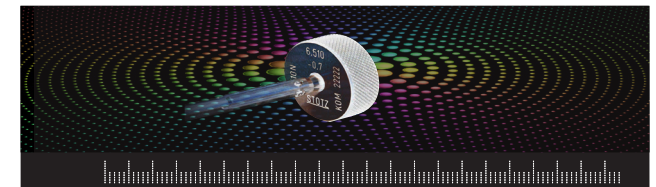
Czech Republic, Slovakia
STOTZ Slowakei
– sales- and service-branch



SIB Scanning-Measuring Station



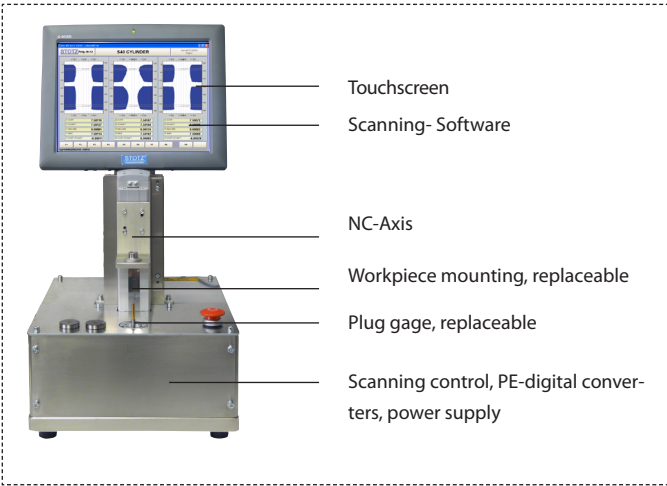
Advanced Machine & Engineering Company
2500 N. Latham Street
Rockford, Illinois 61103
Phone (815) 962-6076 Fax (815) 962-6483
info@ame.com www.ame.com/stotz



SCANNING

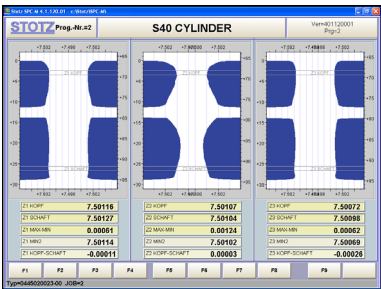
Mobil Scanning - Measurement System

Scanning-Measuring station SIB



- Inexpensive
- Mobil applications
- Accuracy to 0,15 µm
- Diametrical form checking to 1 µm
- Diameter tolerance 1 µm
- Flexible use for different applications

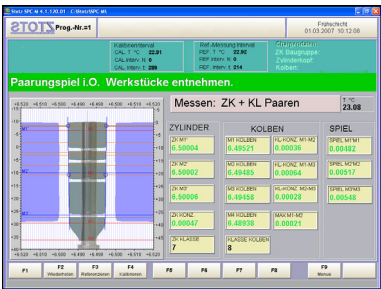
SIB for I.D. (inner diameter)



SAB for O.D. (outside diameter)



SPB for Matching



Lands and holes with different tolerances in the scan range may be adjusted on the scanning software. Easy operation via touch screen. Assessment of the workpiece at a glance!

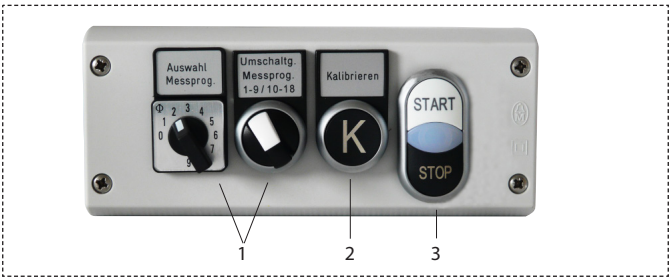
Technical Data SIB

Equipment features	
Power supply	115/230 V
Graphic-Display	12,1" Touch-Screen 1024 x 768
Measurement	Ethernet
Port for selection box	
Serial interface	RS232 COM1
USB	8 x I/O opto
Dimensions	387 x 162 x 72 mm
Pneumatic measuring channels	1/expandable to 2
Dimension	310 x 620 x 350 mm

Optional Accessories

Selection box	WTMSG1
---------------	--------

Selection Box WTMSG1



Position	Description
1	Measurement program selection switch
2	manual calibration
3	Program Start/Stop