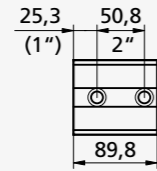
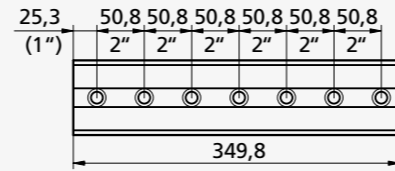


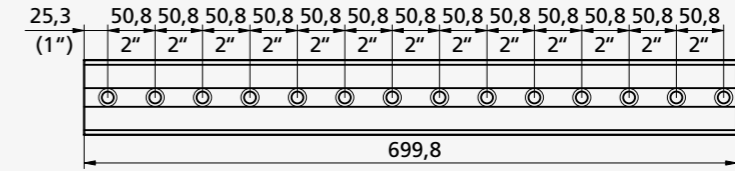
PCB2-90 kg ~1,7



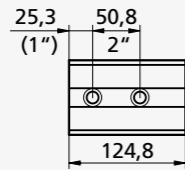
PCB2-350 kg ~6,7



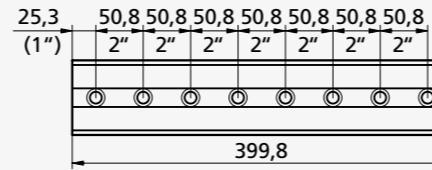
PCB2-700 kg ~13,4



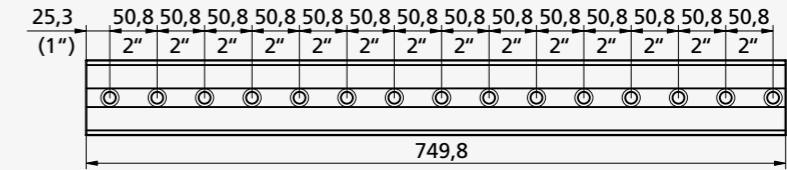
PCB2-125 kg ~2,4



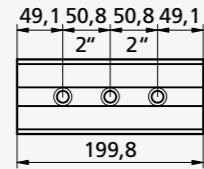
PCB2-400 kg ~7,6



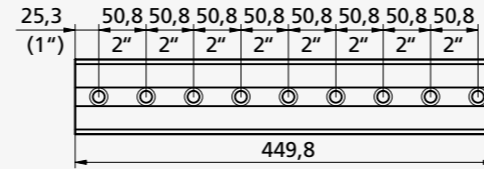
PCB2-750 kg ~14,3



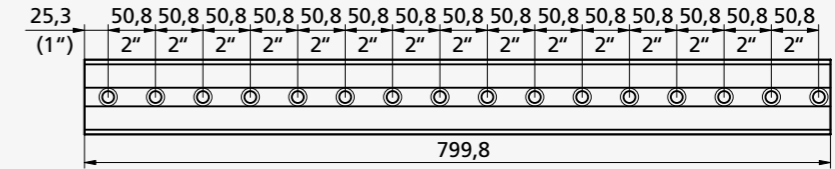
PCB2-200 kg ~3,9



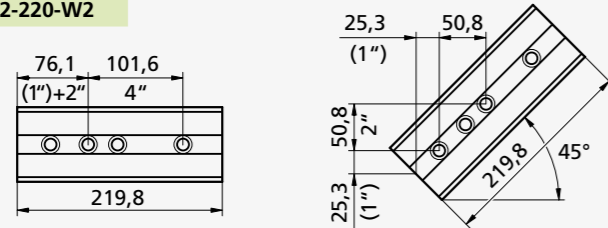
PCB2-450 kg ~8,6



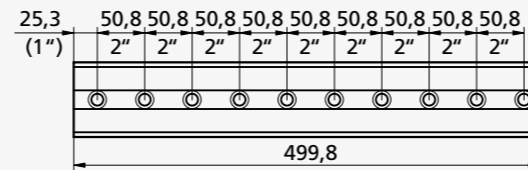
PCB2-800 kg ~15,3



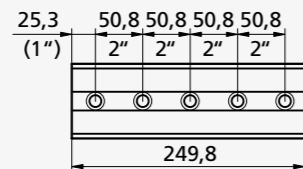
PCB2-220-W2 kg ~4,2



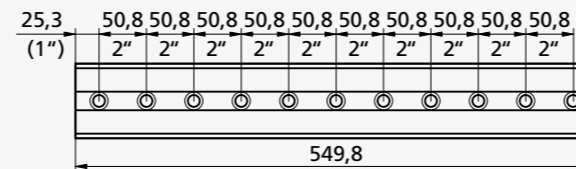
PCB2-500 kg ~9,5



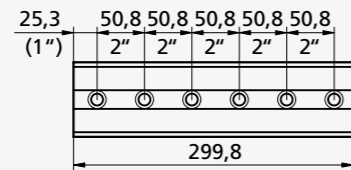
PCB2-250 kg ~4,8



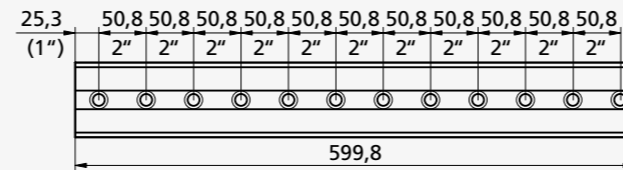
PCB2-550 kg ~10,5



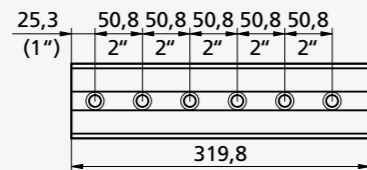
PCB2-300 kg ~5,7



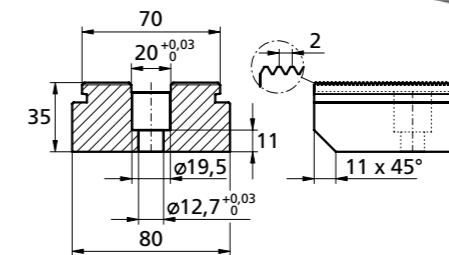
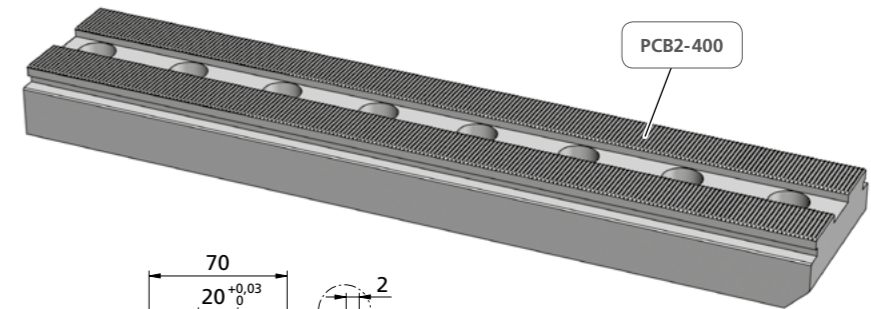
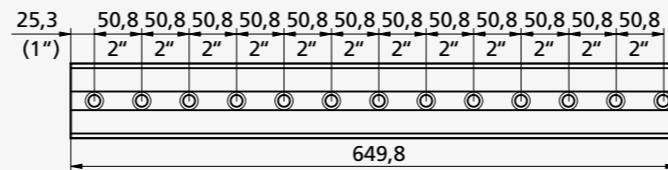
PCB2-600 kg ~11,5



PCB2-320 kg ~6,1



PCB2-650 kg ~12,4



Triag International / Bösch 84 / CH-6331 Hünenberg
Tel. +41 41 727 27 77 | spannen@triag-int.ch | clamping@triag-int.ch

